

THE CCF BULLETIN

MAGAZINE OF THE CIVIL CONTRACTORS FEDERATION
WESTERN AUSTRALIA

EDITION 4 2023



2023 WA Earth Awards winners

City of Stirling takes the lead in civil apprenticeships

Construction costs to soar under new Government policies

INSIDE:
WA suppliers
Guide
2023/24



CIVIL CONTRACTORS
FEDERATION



Local service and support

Our dedicated and experienced state-based teams can help get your super sorted so you can get on with running your business.

📞 1300 361 784

📄 cbussuper.com.au

This information is about Cbus. It doesn't take into account your specific needs, so you should look at your own financial position, objectives and requirements before making any financial decisions. You should read the Employer Handbook, Cbus Industry Superannuation Product Disclosure Statement (PDS) and other relevant documentation to decide whether Cbus is right for you. Also read the Target Market Determination at cbussuper.com.au/tmd. Call 1300 361 784 or visit www.cbussuper.com.au

United Super Pty Ltd ABN 46 006 261 623 AFSL 233792 as Trustee for the Construction and Building Unions Superannuation Fund ABN 75 493 363 262 (Cbus and/or Cbus Super).

The CCF Bulletin contents

- | | | | |
|----|---|----|---|
| 02 | From the President
Leon Fogliani | 30 | Women in Civil
NAWIC WA Awards |
| 04 | From the CEO
Andy Graham | 32 | Member Profile
WA Fuel Supplies |
| 06 | Issues
Federal infrastructure funding
Traffic Mgmt. Scheme concern | 34 | Events
Energy Infrastructure Breakfast
National Earth Awards
WA Earth Awards |
| 10 | News
CCF announces National CEO
New State energy agency | 40 | News
Position Partners
Monford Group
Brooks Access
Total Rockbreaking Solutions |
| 12 | Training Feature
City of Stirling takes lead in civil
apprenticeships | 44 | Welcome New Members |
| 14 | 2023 WA Earth Awards
Winners feature | 45 | 2023/24 Suppliers Guide
Associate Members Directory |
| 26 | Project Feature
Bunbury Outer Ring Road | | |

COVER PICTURES: WA Earth Award
winning projects. Full story page 14.



**CIVIL CONTRACTORS
FEDERATION**

The Voice of the Industry

CCF WA Ltd
70 Verde Drive
Jandakot, WA 6164
Phone: (08) 9414 1486
Email: ccfwa@ccfwa.com.au
Web: ccfwa.com.au

Andy Graham
Chief Executive Officer
Email: agraham@ccfwa.com.au

Kylie Bronleigh
Member Services Coordinator
Email: kbronleigh@ccfwa.com.au

Christie Ledwidge
Administration Coordinator
Email: clledwidge@ccfwa.com.au

Alice Graham
Marketing & Communications Coordinator
Email: alice@ccfwa.com.au

CCF WA Board Members
President - Leon Fogliani (BMD
Constructions)
Vice President - David Schlueter
(Enviro Infrastructure)
Jason Flowerdew (DT Infrastructure)
Peter Moore (Monford Group)
Tinus Nagel (WA Limestone)
Tony Ricciardello (Georgiou)
Tim Ryan (RJV)
Anthony Tsalikis (GMF Contractors)
Mick Unger (Ertech)

*Copyright Warning: All editorial and some
advertisements in this publication are subject to
copyright and may not be reproduced in any form
without written authorisation.*



Sting in the tail of Federal infrastructure funding review



While other states count the cost of the Federal Government's infrastructure funding review, here in WA we got off fairly lightly – when it came to immediate funding cuts, at least. Longer term, the new 50/50 State/Federal funding rule for regional projects – the same as the existing arrangement for metropolitan projects – will make it harder for the State Government to continue delivering its vital program of upgrades to WA's ageing regional road network.

Another potential long-term issue is the Federal Government's decision to re-define 'nationally significant' – its benchmark for funding – as projects worth more than \$500 million. This is an unreasonable restriction that would rule out almost every regional road project in WA. Only the Bunbury Outer Ring Road springs to mind as a regional WA road project that's been worth that much. As noted by CCF's National President Mick Boyle in this edition (see page 6), putting such a high dollar value on national significance will disadvantage local and regional contractors and communities. It could encourage state governments to 'bundle' separate projects into packages big enough to achieve national significance and

reduce the number of medium-sized contracts, compromising industry sustainability. Historically, the Federal Government has contributed a larger proportion of funding for regional projects (80%) due to the high strategic importance to the nation of connectivity between states and regions. That logic hasn't changed; the only difference is that this Federal Government is now trying to stretch its infrastructure budget further. As Mick rightly suggests, the Feds have far more funding power than the states and shouldn't be backing away from their responsibility in this area.

It was a pleasure to join 200 Members and guests at CCF WA's first Energy Infrastructure Breakfast on November 9, and hear from two knowledgeable and engaging speakers in Zane Christmas (Western Power) and Russell James (ATCO).

Thanks to Zane and Russell's insights, attendees came away with a better understanding of the challenges and opportunities for civil contractors as WA (and the world) transforms its energy networks as part of the transition to net zero. Our three-pronged commitment to Members is to represent, inform and connect; and

events such as the Energy Infrastructure Breakfast certainly tick the boxes for informing and connecting. The third element, representation, is perhaps our most vital role, and CCF WA is gearing up to ensure we effectively represent members' interests in the energy infrastructure segment.

Regular, structured engagement is important, and we've proposed to Western Power that the most effective means of industry engagement is through a standing committee, along the lines of similar long-standing committees operated by Main Roads and the Water Corporation.

The scale of Western Power's proposed capital expenditure is certainly impressive, with nearly \$20 billion worth of capital investment planned over the next decade, and around \$12 billion in distribution and transmission alone.

That level of activity will challenge both clients and the contractors. Regular engagement in a collaborative spirit will be vital.

Leon Fogliani
CCF WA President

PSC INSURANCE BROKERS PERTH:

Sponsors of the Civil Contractors Federation

www.pscinsurance.com.au

PSC Insurance Brokers Perth Pty Ltd is a Corporate Authorised Representative (CAR 1238950) of Professional Services Corporation Pty Ltd (AFSL 305491). Please refer to our Financial Services Guide on our website for information on our products and services and how we are remunerated.



PSC INSURANCE BROKERS PERTH

BROOKS

More than big yellow gear hire

Your complete

Construction Site solution



HIRE

Construction Equipment Hire
Late Model, Low Hour Machines
ISO 9001, 13001, 45001 Accredited



EQUIPMENT SALES

Construction Equipment Sales
Earthmoving Equipment Sales
Finance Available



SITE SERVICES

Solution Based Site Facilities
Power Generation and Water Supply
Site Buildings, Light Vehicles, Green Energy



TRANSPORT

Heavy Equipment Transport
Prime Movers, Hiabs, and Tilt Trays
Anywhere in Australia



ACCESS

EWP Hire and Sales
Boom Lifts and Scissor Lifts
Telehandlers, Forklifts, and Cranes



AIRWAYS

Corporate Charter Flights
FIFO Flights
Urgent Air Freight



WA Family Owned & Operated since 1979

1300 BROOKS (276 657)

sales@brookshire.com.au brookshire.com.au

BROOKS

'Better being with Brooks'

Industrial relations landscape is changing rapidly



There's a scene in the ABC TV show *Utopia* where the Nation Building Authority's Tony Woodford visits a government project site to figure out why labour costs are double the original estimates. "You pay peanuts, you get monkeys," an employee representative tells him. "Peanuts? That guy's going to be on \$120,000 a year," Tony replies, gesturing towards a traffic controller. He goes on to point out that the traffic controller's wage is \$50,000 more than the government pays a high school teacher. I was reminded of this scene while reading a recent *AFR* opinion piece by John Lloyd, the inaugural commissioner of the ABCC. Mr Lloyd compares the standard weekly wage of a traffic controller on the Melbourne Metropolitan Tunnel Project, \$126,200 a year, with the starting salaries of nurses (\$72,000) and teachers (\$78,000) in Victoria, and notes: "A workplace relations system that produces such bizarre pay relativities is in strife".

While the new government-mandated wage for traffic controllers is not at the absurd levels seen on eastern states major projects, it's nevertheless way out of step with the typical wages for semi-skilled, entry-level Western Australian workers in construction and other sectors.

Recent developments here in WA suggest we may be heading in the same direction. In October, Main Roads WA made changes to its Traffic Management Company Registration Scheme, mandating a minimum ordinary hourly rate of \$37.24 per hour for all traffic controllers on state roads – whether they're working on a Main Roads project, or for any other client.

Traffic controllers must also receive all relevant loadings and entitlements in the Building and Construction General On-site

Award 2020. An entry-level traffic controller's base 38-hour week wage will now be \$73,586 per annum, or \$78,672 per annum with fares and travel allowance. Working a 50-hour week, they'll be paid \$116,851 per annum.

While the new government-mandated wage for traffic controllers is not at the absurd levels seen on eastern states major projects, it's nevertheless way out of step with the typical wages for semi-skilled, entry-level Western Australian workers in construction and other sectors.

As our article on page 8 explains, Main Roads has acted in response to concerns about some isolated pay inconsistencies in the traffic management industry. In our view, overriding the Fair Work system to impose a rate on the whole industry that's 38% higher than the award is a massive over-reaction. The article explains why, and the effects this will have.

The seemingly random decision to overpay

traffic controllers started to make a bit more sense in mid-November with the release of the Expression of Interest document for the Alliance Contract to design and construct Tonkin Highway Extension and Thomas Road Upgrade (Package 1 of 2). Under the heading 'Industrial Relations' the EOI notes: "Main Roads intends on mandating best practice industrial relations principles (BPIR) into the Project Alliance Agreement."

At the core of BPIR is a government-sanctioned pattern agreement. In

Queensland, it's already in force and known as BPIC (best practice industry conditions). A typical BPIC agreement includes:

- Base pay rates more than 80% higher than award rates.
- A site allowance of up to \$8.00 per hour (the maximum allowance kicks in at \$700 million project value).
- A Fares and Travel Allowance of \$50.00/day, more than double the BCGOA rate.
- A 36-hour week.
- Mandatory employer contributions to various income protection, redundancy, and welfare trusts totalling around \$200 per week per employee.

All up, \$130,000 per annum for a 36 hour week with no trade qualifications required. Bizarre, indeed.

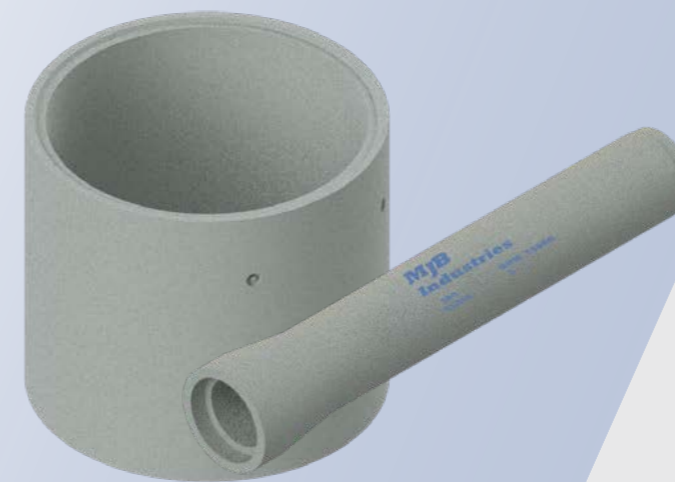
Queensland Government agencies are careful to point out that BPIC isn't mandatory, but contractors fully understand that if they don't play ball, they won't win the work.

As a guidance note from Brisbane law firm Gadens explains, BPIC is integral to the tender process, and is then embedded in the contract: "(BPIC) is a mandatory evaluation criterion, with all contractors commonly required to demonstrate: how they will provide terms and conditions of employment, including specific pay rates, for their employees who will perform work on the project, which are at least equivalent to the BPICs for the project; and the best endeavours process they will use to engage subcontractors or sub-subcontractors who provide terms and conditions of employment, including specific pay rates, for their personnel who will perform work on the project, which are at least equivalent to the BPICs."

"The commitments made by successful tenderers ... will be included in the terms and conditions of relevant contracts and subcontracts on a cascading basis."

Main Roads isn't sure yet how the BPIR requirement will be worded in WA, although it's been suggested there will be no room

...continued over page



SECOND BI-DIRECTIONAL PIPE PLANT COMMISSIONED

MJB Industries, a leading manufacturer of concrete pipe and spun liners, made the exciting announcement earlier this year that it would be constructing a new pipe plant.

MJB is pleased to announce that its second bi-directional pipe plant is now fully operational, greatly increasing our production output and reducing lead times. The new plant's first priority will be to produce spun liners, stockpiling them for current and future orders.

The current market demand for these products had its only bi-directional pipe plant operating at full capacity, with a production schedule booked months in advance. This was creating delays for MJBs customers, who were waiting for products to be ready before they could begin their projects.

Built and designed in-house MJB faced some challenges in the construction of the new plant, including excessive lead-times on parts and components due to both ongoing manufacturing disruptions and freight interruptions. Despite these challenges, MJB Industries committed to using locally sourced material where available to ensure the timely completion of the project.

The new pipe plant will ensure MJB Industries stay competitive in the market. It is also expected to create new job opportunities and boost economic growth in the area. The company's management stated that they are excited about the new plant, which will help them to continue providing high-quality products and services to their customers.



08 9797 0999



sales@mjbindustries.com

From the CEO, continued...

for negotiation – it will be expected that everyone on the site is paid the BPIR rates. WA's first iteration of BPIR will include rates on a par with the current METRONET head contractor enterprise agreements, around 35-40% over the award. Looking at the current rates in Victoria and Queensland, it's likely that award disparity will keep climbing until we reach 70-80%.

One of the reasons we have avoided massive blowouts is that wages on our major projects have not exploded, as they have in some other states. Yet here we are, lighting the fuse.

It's reasonable to wonder why a government would insist on extremely high pay rates that will add to the cost of not only their own projects, but also the cost of land development and other private sector works.

Only a few weeks ago, Deputy Premier Hon Rita Saffioti MLA rightly noted that infrastructure projects in WA had not suffered the type of cost blowouts seen on the Eastern States.

Surely, one of the reasons we have avoided massive blowouts is that wages on our major projects have not exploded, as they have in some other states. Yet here we are, lighting the fuse.

According to Main Roads, BPIR is needed to attract and retain more experienced civil construction workers.. The problem with that argument is the wages currently available on major transport projects are already high by industry standards and already attracting the best people from elsewhere. Ask any land development contractor how hard it is to keep good employees.

Of course, industry also wants a skilled, experienced and well-paid civil construction workforce. But we believe blunt instruments like BPIR/BPIC are not the best way to achieve it, and a better outcome can be achieved with industry consultation.

Andy Graham
CCF WA CEO



Federal Government must not back away from infrastructure funding responsibilities

Australia's peak civil construction industry body is pleased that the Federal Government has finally presented the findings of its infrastructure funding review.

Civil Contractors Federation President Mick Boyle said it is understandable that states and territories were upset at the cuts to their project pipelines. Clarity is required on the timing of funds set aside for delayed projects.

Mr Boyle said each state and territory would need support to deliver the infrastructure it needs, and the Federal Government may need to accept that its \$120 million infrastructure commitment over 10 years is no longer sufficient to deliver a strong nationwide pipeline of road and rail upgrades.

"The reality is that construction costs have increased dramatically," he said. "Labour, concrete, steel, asphalt, fuel and other inputs are all significantly more expensive than they were a few years ago. The Federal Government needs to adjust for that reality. "States and Territories have limited ability to raise funds for the infrastructure they need to meet the growth of our nation. The Federal Government's new 50/50 funding rule for regional projects will put an additional burden on the states, compromising the viability of nationally significant regional projects."

"CCF requests that the Federal Government

reconsider the new 50/50 funding rule for critical regional projects which may need more Federal funding to be viable.

Mr Boyle said the Federal Government needs to be clear and transparent around the 'national significance' threshold of \$500 million, to ensure it does not disadvantage the local and regional contractors and communities the government says it wants to support.

"That threshold could rule out far too many worthy projects, especially in the regions but also in metropolitan areas," he said. "The guiding principles for the Federal Government should be that projects are cost-effective and have a strong business case. By all means, set a minimum amount to keep the pipeline manageable, but \$500 million is too high.

"Research has shown that 'mega projects' are the most susceptible to cost blowouts, so the last thing the Federal Government should be doing in setting its funding threshold, so it creates more 'mega projects'.

"CCF is prepared to work with government as they implement the Infrastructure Policy Statement to find workable productive procurement solutions for industry to ensure that the process creates project sizes for Australia's local and regional contractors so they are able to deliver Australia's infrastructure."

VOLVO

**AVAILABLE TO
VIEW NOW**



JOIN US ON THE JOURNEY TO A SUSTAINABLE FUTURE

Unleash the future of construction with the revolutionary ECR25 Electric compact excavator and L25 Electric compact wheel loader from Volvo.

It's not just progress; it's a quiet revolution reshaping the future of your construction game.

WHY CHOOSE VOLVO ELECTRIC MACHINES?

- ✓ Zero exhaust emissions from use
- ✓ Significantly lower noise levels
- ✓ Reduced energy costs
- ✓ Premium warranty coverage



Zero exhaust emissions from use



Charge up to 80% in as little as 1-1.5 hours.



up to an 6 hour working day on a single charge depending on application.

Big Enough to Trust, Small Enough to Care

CONTACT YOUR LOCAL BRANCH FOR MORE INFORMATION

CJD.COM.AU | 1300 139 804



CCF WA briefing note: Industry concerns with recent changes to Main Roads WA's Traffic Management Company Registration Scheme

Briefly, what has changed and why does CCF WA oppose these changes?

Main Roads WA has announced changes to its Traffic Management Company Registration Scheme (Scheme) designed to improve working conditions for traffic controllers. The key change (and the focus of this backgrounder) is that Main Roads has mandated that traffic controllers working on state roads must be paid a *minimum ordinary hourly rate of \$37.24 per hour*. This is 38% higher than the ordinary hourly rate for traffic controllers (CW2 classification) in the *Building and Construction General On-site Award 2020* (BCGOA).

Traffic controllers with higher accreditations (e.g. attenuator operators) must be paid an ordinary hourly rate of \$38.72 per hour.

All other employment conditions (including overtime and casual loadings) must meet or exceed those detailed in the BCGOA. The rates will be enforced through the Scheme; companies must have Scheme registration to implement traffic management on state roads and some local roads.

Entry-level traffic controllers will now be paid a minimum of \$73,586 per annum for a standard 38-hour week, or \$78,672 per annum including fares and travel allowance (paid to all employees who start and finish work on site).

Since these changes were announced, CCF WA has been contacted by many contractors and traffic management companies, all expressing their deep concerns at the likely effects on their businesses and the sector more broadly, and trying to understand how and why this decision was made.

The new traffic controller pay rate is based on the CW2 rate in METRONET project enterprise agreements (albeit 4% higher), which is far higher than industry standards. It is highly concerning that the Government regards this rate as appropriate for all traffic management works, including local government and private sector works.

The new rate is so far out-of-step with industry norms, that it will inevitably result in wages pressure across the board, as more skilled and experienced workers seek parity with entry-level traffic controllers. This will lead to significantly higher construction costs on all government and non-government construction works.

When is this happening?

The new rates officially take effect from December 1, 2023, for Main Roads’ own contracts, and from July 1, 2024 for all other traffic management works on state roads.

Why has Main Roads made this change?

Main Roads says it wants to improve pay and working conditions for traffic controllers, and also believes the changes will: help attract and retain more experienced workers; remove pressure on companies to reduce wages to win work; and increase the quality of traffic management across the road network.

Are traffic management companies pressured to reduce wages to win work, as Main Roads claims?

Generally, no. All contractors and suppliers are under constant pressure to cut costs and margins to win work, but the realities of the labour market are that wages go up, not down; and the Fair Work system ensures they cannot be reduced below award rates.

We are aware, however, that Main Roads had some specific concerns with some traffic controllers being paid at a lower rate (under the *Miscellaneous Award 2020*) and others paid at the higher BCGOA (CW2) rate. These inconsistencies could have been addressed by mandating the BCGOA rate. This would have represented a generous 12.2% pay raise for the lowest paid traffic controllers, and ensured their base rate was comparable to other unskilled/semi-skilled construction sector roles.

How did Main Roads calculate its minimum ordinary hourly rate for traffic controllers?

The \$37.24 per hour rate comprises the base hourly rate for traffic controllers (CW2 classification) from the METRONET project enterprise agreements (\$35.67/hour), plus the standard BCGOA civil construction Industry Allowance (\$1.57/hour).

Why isn't this a reasonable base rate? Isn't it on a par with current industry rates?

No, it’s well above the current market rates for both traffic controllers and similar semi-skilled roles, and is in fact higher than the rates paid to much more skilled and experienced construction workers.

The enterprise agreement (EA) rates on METRONET and other nationally significant major projects are much higher than industry standards, reflecting their strategic and political importance. A typical METRONET head contractors’ own company-wide EA rates are about 20-25% lower than their METRONET EA rates. (And remember, the new Main Roads ordinary hourly rate for traffic controllers is 4% higher than the METRONET EA.)

The new Main Roads rate will put entry-level traffic controllers on a higher *base* rate than the *above-award* rates being paid to experienced workers doing more skilled and more physically demanding work (civil construction workers such as drainers, asphalt workers, rock pitchers and brick pavers typically earn about \$33.00 per hour in the current labour market – 20-25% over-award).

Asphalt workers, for example, often work closely with traffic controllers on road resurfacing works. When skilled and experienced asphalt workers learn that newly hired traffic controllers are being paid significantly more than them they will, of course, seek a pay rise.

How does the new rate for traffic controllers compare with other occupations?

- The table below compares the new rate with similar unskilled/semi-skilled roles, and with other occupations in construction and elsewhere. It highlights just a few of the wage equity issues that will result from this pay mandate:
- Traffic controllers will receive a higher entry level full-time wage than degree-qualified graduate engineers and nurses.
 - Traffic controllers will be paid significantly more than diploma-qualified enrolled nurses and trade-qualified horticulturalists.
 - Traffic controllers will be paid significantly more than skilled drainers and final trim plant operators in civil construction.
 - The base pay rate for traffic controllers will be much higher than other semi-skilled (i.e. non-trade) roles, e.g. asphalt workers, local government workers, and truck drivers.

While most of the public sector wages listed will increase over time through increments, even long-serving State Government

blue-collar workers, transit officers and enrolled nurses may never be paid what their Government has mandated for entry-level private sector traffic controllers.

How will traffic management companies be affected by these changes?

Traffic management companies are facing major organisational, contractual and administrative issues.

Although the higher rates are only mandated on state (not local) roads, in practice that will be very difficult to manage. Imagine a scenario where a group of traffic controllers work for half the day on a Main Roads project, and the other half of that day on a local government project or private event. These workers are unlikely to accept being told that their pay rate will fall more than \$10 per hour after lunch.

To avoid these issues, some companies may relinquish their Scheme registration and avoid state road work altogether – potentially resulting in a two-level system, with lower quality standards on local roads.

There are real concerns that some companies will struggle with cashflow issues resulting from the sudden large increase in payroll.

There are also fears that a massive increase in traffic management costs will cause the market to shrink, affecting the viability of businesses.

How will civil contractors be affected?

Main Roads has assured its contractors they will be compensated for the financial impact of these changes – although experience shows that these high-level assurances do not always flow down to the project level, and drawn-out claims are likely.

But this change won’t just affect Main Roads contracts. Hundreds of contracts with other public and private sector clients will also be affected; anything that involves traffic management on state roads. For contractors locked into traffic management rates that are embedded into the pricing of existing contracts, it will result in reduced margins or losses for their business.

On the human resources side, contractors expect there will be widespread concern among blue-collar employees, as skilled and experienced workers realise they are now paid less than traffic controllers (and of course, these wage concerns may extend beyond the construction sector).

(Continued next page)

Table 1. Minimum wages comparison for various occupations

Occupation	Award and classification	ANZSCO Skill Level	Annual wage, 38 hour week	Annual wage, 50 hour week
Experienced Local Govt works crew member	Municipal Employees Award (WA) - Level 3	4	\$48,696.96	\$70,648.80
Landscape Gardener	Gardening and Landscaping Services Award - Lvl 3	3	\$49,676.64	\$76,739.52
Truck driver - B-double	Road Transport and Distribution Award - Level 3	4	\$51,692.16	\$75,550.08
Skilled, experienced asphalt worker	Asphalt Industry Award (Fed) - (Skill Level 4)	4	\$53,016.60	\$81,810.59
DPIRD Road Const. and Maint. Employee	AWU General Agreement (DPIRD) (WA) - Lvl 2	5	\$54,952.56	\$80,315.28
State Govt Botanical Park Worker	AWU General Agreement (DBCA) (WA) - Lvl 2	5	\$56,019.60	\$86,010.00
Traffic Controller (BCGOA)	Building & Const. General On-site Award - CW2	5	\$58,883.24¹	\$87,734.12¹
State Govt Horticulturalist - Turf	BGPA (Operations) Agreement (WA) - Lvl 3.1	3	\$61,987.12	\$90,596.56
Drainer - civil construction	Company Enterprise Agreement - Level 4	4	\$66,508.52 ¹	\$98,878.76 ¹
PTA Transit Officer (*40 hour week)	PTA/ARTBIU Industrial Agreement (WA) - TO1	4	\$67,594.80*	\$96,304.00
Experienced Graduate Engineer	Professional Employees Award 2020 (Pay point 1.4)	1	\$67,804.00	\$88,920.00
Enrolled Nurse - WA Health Dept	WA Health System Industrial Agreement	2	\$69,179.76	\$101,108.88
Final Trim Plant Operator - civil construction	Typical Company Enterprise Agreement - Lvl 6	4	\$69,847.96 ¹	\$103,759.48 ¹
Nurse - WA Health Dept	WA Health System Industrial Agreement - (1.1)	1	\$72,827.00	\$106,451.00
Teacher - WA Education Dept	School Education Act Employees’ Agreement - (2.1)	1	\$78,397.00	\$78,397.00
Traffic controller - new State roads rate	Main Roads mandatory conditions	5	\$78,671.84¹	\$116,851.52¹
Advanced traffic controller - new rate	Main Roads mandatory conditions	5	\$81,596.32¹	\$121,125.80¹

1. Annual wage calculated including fares and travel allowance paid to employees who start and finish work on a construction site.

How will construction costs be affected?

The direct effect on individual projects will vary. Traffic management costs are typically about 5% of a road project budget. The new pay rates will add about 40% to the rates currently charged by traffic management companies; meaning road construction costs in Western Australia should increase overall by about 2%.

Direct cost increases will be higher for traffic management-intensive brownfield works, such as local government road upgrades and resurfacing programs. Traffic management typically accounts for about 10% of local government works' contract value, or up to 15% where complex traffic management is required, such as in commercial precincts; so road construction costs for local governments are likely to increase by 4-6%.

Costs will also rise for most construction and maintenance works by public and private sector utilities, including Western Power, Water Corporation, ATCO Gas, NBN, and Telstra. Utility construction/maintenance works are often conducted within the road reserve, requiring traffic management.

The direct costs of commercial/residential building construction and land development requiring traffic management will also increase.

Overall, we estimate the Main Roads rates will add between \$80 million and \$100 million to the annual cost of traffic management in WA.

Harder to quantify, but potentially far more significant, are the indirect costs from upward wages pressure across the construction sector – and more broadly.

CCF names new National CEO

Nicholas Proud has been appointed as National CEO of the Civil Contractors Federation (CCF) and will commence in the CCF Canberra Office early in the New Year.

Mr Proud brings to the role 20 years of diverse experience in policy, advocacy and finance within peak bodies and industry associations.

CCF National President Mick Boyle said: "There has never been a more important time in Australia for civil contractors and the Civil Contractors Federation. With that in mind we undertook an extensive recruitment process for this important role and Nicholas was the standout candidate. The National Board and I are really looking forward to working with Nicholas who has a wealth of experience and an impressive track record of strong leadership and effective advocacy in similar roles."

Mr Proud said: "I have really enjoyed my last 8 years as CEO with PowerHousing Australia, effectively advocating for housing

affordability and building great communities. This next dynamic role is focussed on national infrastructure delivery across the transport, water, and energy sectors all of which are so important for communities and affordable housing. I am looking forward to my National CEO role at the Civil Contractors Federation and building on all the great work my State and Territory colleagues are doing around the country to work with government and advocate for our members at a federal level here in Canberra."

Mr Proud will commence his new role on Monday 29 January 2024.



Another WA Earth Award winner takes the national prize



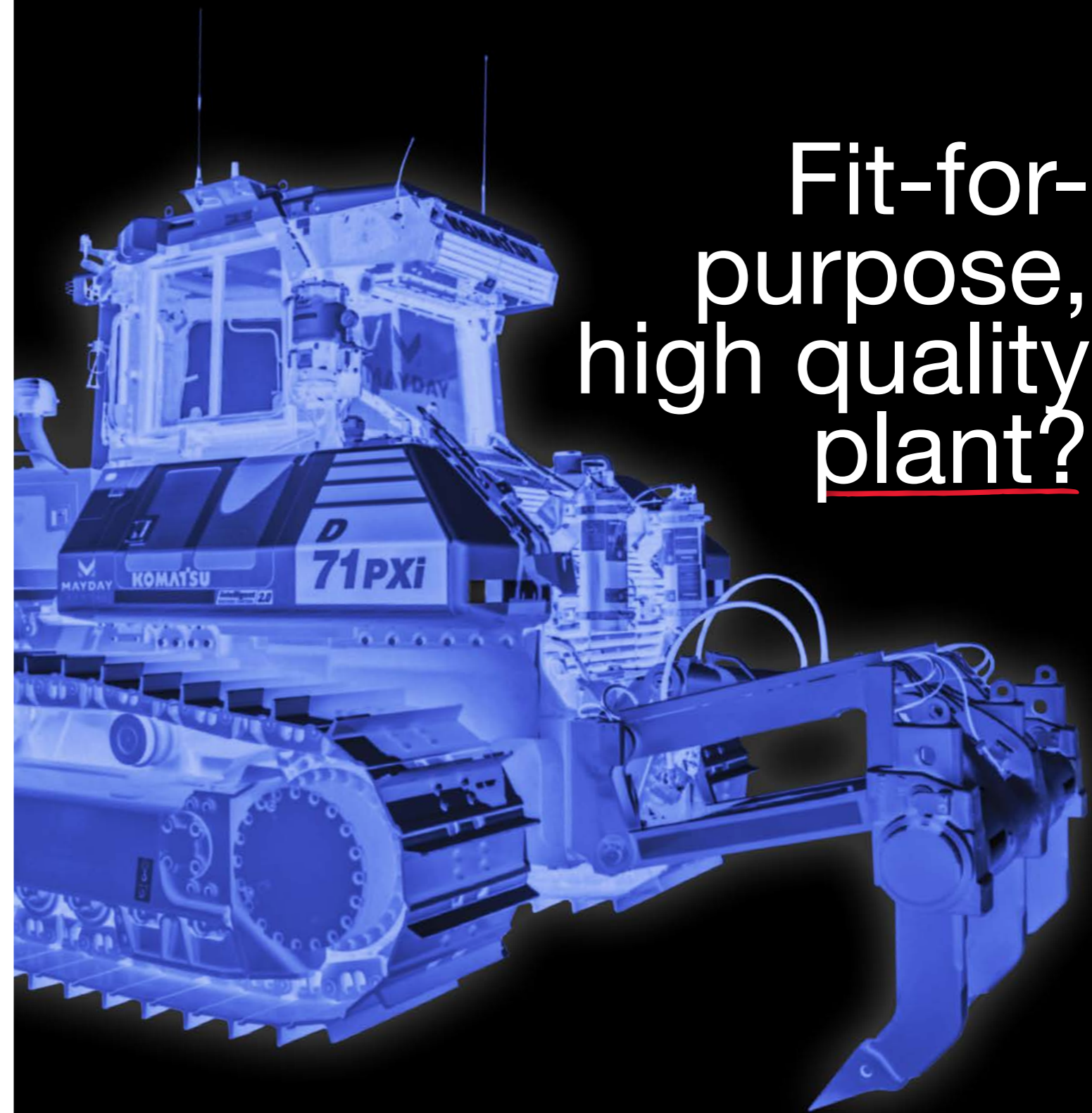
CCF WA Member Ertech's Onslow Boating Precinct Stage 1A project won the National Earth Award for the \$5-10 million project value category at the 2023 CCF National Earth Awards, held on November 10 in Canberra.

Ertech's 2023 win followed on from two WA winners at the 'nationals' last year – Rob Carr and Water Corporation, with the Gnangara Branch Sewer Section 2; and DT Infrastructure, with the Denny Avenue Level Crossing Removal Project.

Ertech Executive General Manager, Mick Unger, along with Project Manager Bradley Saunders, attended the awards ceremony in Canberra.

L-R: Bradley Saunders, Mick Unger.

Fit-for-purpose, high quality plant?



It's in our bones.



maydayrental.com.au

08 9409 0400

in f @

City of Stirling takes the lead with new apprenticeships

By John Feary



Trainee Mark Wainwright operates an educator truck in the City of Stirling.

Leading registered training organisation Civil Train has achieved a significant breakthrough for Western Australia's new civil construction apprenticeships with the signing of a new agreement with the City of Stirling.

Under the agreement, Civil Train is delivering training to Certificate III in Civil Construction and Certificate IV in Civil Construction - Supervision level for employees of the northern metropolitan local government area, Perth's largest in population numbers.

The civil construction apprenticeship was first introduced nearly two years ago to extend the formal recognition of civil construction qualifications as a trade.

A spokesperson said the agreement fits the City of Stirling's commitment to the continued upskilling of its civil maintenance and construction staff.

"The training allows our employees to further develop their skills and overall helps to improve the services we deliver," the spokesperson said. "This can also feed down to provide benefits for the industry in WA."

One of the benefits of the agreement would be on safety. "Training often makes employees consider the work they are doing, with safety becoming front of mind. For longer-term employees, training has the bonus of refocussing attention."

"Employees working in the civil maintenance and construction areas deal with high-risk situations so training - tool box or prestart - can help with a safety focus."

The agreement should also further expand the potential employment pool for the council, which already has a strong reputation for recruiting from a wide variety of backgrounds covering all ages from school leavers to people who have retired and come back to work.

Karyn Grant, the Operations Manager for Civil Train, said the agreement would deliver the advantages of the 36-month apprenticeship that puts civil construction on a more equal footing with traditional building trades.

The training will be delivered via on-the-job assessment of operations that utilise specific tools and equipment as well as sessions at Civil Train's Jandakot premises covering general small plant and equipment operation, hand and power tools as well as management and procedural activities.

Existing workforce members will also be able to take advantage of credit transfers for their demonstrated skills and prior learning in areas such as traffic management and plant operation.

Ms Grant said the extension of training as a goodwill measure to Stirling's current workers, as well as new entrants, would be an incentive for them to enhance their work skills and standards. The mature age people on the council include many from non-English speaking backgrounds.

"Training often makes employees consider the work they are doing, with safety becoming front of mind. For longer-term employees, training has the bonus of refocussing attention."



Logan Foley, apprentice.

Financial support for the program by the Construction Training Fund, which includes funding for any wage difference in the transition between traineeships and apprenticeships, is a further impetus.

Stirling has 18 maintenance crew and four construction crew taking the Certificate III in Civil Construction plus four supervisors taking the Certificate IV in Civil Construction - Supervision.

The council expects the training initiative will set the City of Stirling apart from many other local governments. "It means that the city can present itself as a local government employer of choice for WA's civil maintenance and construction industry," the spokesperson said.

At the same time, it hopes the initiative will be taken up by other local government bodies.

"If the city is able to encourage more local governments to upskill their employees, then that can only be a good thing. It is certainly a program that the city would encourage other local governments to take up."

Below: City of Stirling apprentices Jack Ayre and Stevan Trajkovski.



2023 WA Earth Awards celebrate civil infrastructure excellence

WA's iconic Forrestfield-Airport Link rail project has won the \$150 million-plus project value category at the 2023 WA Earth Awards, the civil construction industry's awards for project excellence.

Now known as the Airport Line, the Forrestfield-Airport Link project involved two tunnel boring machines tunnelling for 8km – the longest tunnels ever built in Western Australia.

The congestion-busting Leach Highway and Welshpool Road Interchange project won the \$75-150 million category, while two other State Government Transport Portfolio projects took out the under \$2 million and \$5-10M categories respectively.

CCF WA CEO Andy Graham said the dominance of transport projects again this year – with four out of the seven category winners – underlined the importance of road, rail and harbour works to the state's civil construction sector.

"Another hugely important sector for our industry is resources construction projects, and it was pleasing to see our member company Whittens win the \$30-75 million category for works at Fortescue's Iron Bridge project," Mr Graham said.

"Rounding out the category winners were two projects delivered for other highly valued State Government clients – Water Corporation and DevelopmentWA.

"We were thrilled to welcome State Government members of Parliament Hon David Michael MLA and Hon Pierre Yang MLA to the event, and to share in celebrating the winners with them."

Another major transport project, the Mitchell Freeway Extension, was presented with the Judges' Award.

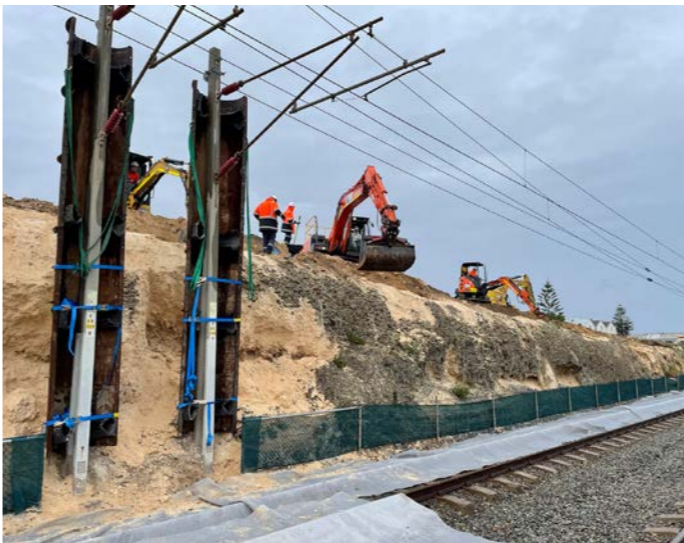
The Earth Award category winners represented WA at the National Earth Awards, held in Canberra on November 10. The 2023 WA winners are pictured on the following pages.



Excellence in Civil Construction: Project value up to \$2 Million (sponsored by WARP Traffic Management) – Leighton Embankment Remediation, Enviro Infrastructure

Enviro remediated a failing limestone embankment, which was causing debris fall and posing a risk to rail operations on the Fremantle Line. The embankment was cut almost 100 years ago in the early development period of Perth's rail network, and years of weathering had caused sectional undermining and erosion to the limestone rock face.

Not only was the remediation footprint located within the structural clearance of the rail line and its high voltage Overhead Live Equipment, but a redundant 600mm asbestos water main was identified as running through the full extent of the 325m long remediation alignment. Despite extensive logistical and planning challenges, the project was delivered on time, on budget and with zero HSEQ incidents or quality non-conformances.





Excellence in Civil Construction: Project value \$2-5 million (sponsored by Brooks Hire) – Belmont Park Optus Stadium DN500 Water Link, Rob Carr and Water Corporation

This project included the construction of a new water distribution main connecting to an existing DN500 water main located in the northern precinct of the Optus Stadium site; and micro-tunnelling under the PTA rail corridor and Graham Farmer Freeway to connect to a proposed DN400 water main located in the Belmont Park Development site.

The proposed pipe alignment extended across an area historically used as a landfill and a concrete batching site. Both controlled and uncontrolled fill were encountered across the site. The area was known to contain remnants of cinders and fly ash from the decommissioned East Perth Power station. This required onerous controls to manage the safety and environmental outputs. Rob Carr showcased exceptional expertise in managing a mix of ground conditions along the tunnel alignment.



NEW-GEN TRITON

COMING SOON



Tougher. Bigger. Better. Closer.

Get ready to work smarter and tow more with new-gen Triton's improved maximum braked towing capacity of 3.5 tonne. Suspension and chassis frame upgrades improve driving stability even when towing a large trailer or boat. It's bigger too with a larger cargo bed and increased

interior legroom – plenty for your whole crew and more. You'll be able to easily carry your workday or weekend essentials, with enough room to fit a 1200 x 800mm Euro pallet in the versatile cargo bed. New-gen Triton is coming.



Register interest today

Overseas model shown. Australian specifications may vary.

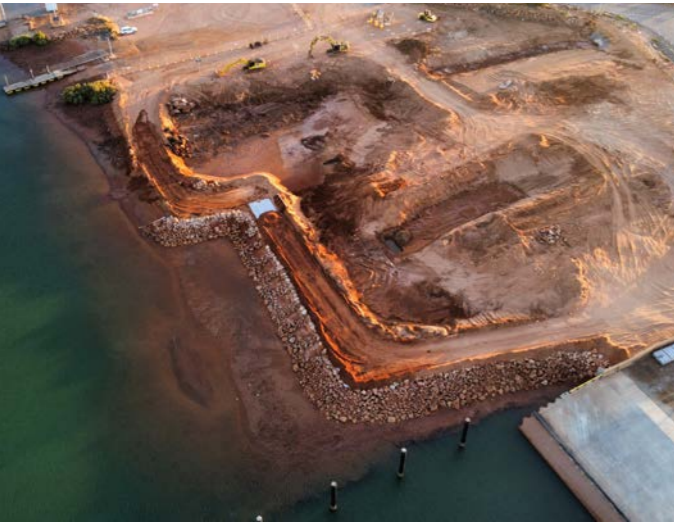




Excellence in Civil Construction: Project value \$5-10 million (sponsored by Brooks Hire) – Onslow Boating Precinct Stage 1A, Ertech

This multi-stage upgrade to the boating facility and supporting infrastructure included the dredging of 45,000 cu.m of material to facilitate the construction of a rock wall revetment; two new boat ramps; and a floating pontoon holding jetty. Also included were a new stormwater drainage line, gross pollutant traps, sealed carpark and driveway, solar-powered street lighting, and associated road furniture.

Ertech's alternative construction methodology involved a temporary earth bund, complete with dewatering systems, to protect the work area from the influence of tides. This allowed work to be performed up to 8m below high tide level, with 70 per cent of the dredging and rock revetment works able to be completed in dry conditions. The entire boat ramp construction was performed in the dry, hugely improving safety and efficiency.



Excellence in Civil Construction: Project value \$10-30 million (sponsored by Reece Viadux) – Princess Margaret Hospital Demolition & Remediation, RJV

This was one of the largest projects of its kind undertaken in an urban setting in WA. It was also one of the most high-risk, requiring significant asbestos removal, innovative solutions for managing the works close to residential areas, and the sensitive treatment of heritage elements.

With 56,000 tonnes of concrete and bricks to be removed from the site, as well as 15,000t of steel, many months of planning went into the careful management of the demolition process.

From the outset, minimising disruption to stakeholders and residents was identified as critical to the successful delivery of the project. Managing dust was a key concern and special care was taken to limit its spread using water mist cannons and scaffold containment sheeting.

To manage the extent of asbestos onsite, various innovative and advanced techniques and methods were employed.



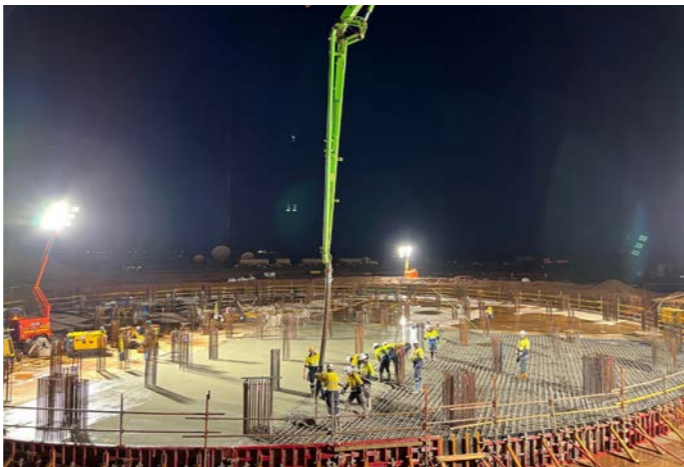


Excellence in Civil Construction: Project value \$30-75 million (sponsored by Alcolizer Technology) – **Iron Bridge Project Earthworks and Concrete – Port, Concentrate Handling Facility & Concentrate Diversion Pond, Whittens**

Whittens delivered the earthworks and concrete for the Concentrate Handling Facility and Concentrate Diversion Pond in Port Hedland – self-delivering over 320,000 cu. m of earthworks and 10,700 cu. m of concrete, and managing a multitude of specialist subcontractors.

Whittens overcame the challenges of completing critical works during the pandemic through detailed planning and efficient execution. During the tender process, the project team identified cost savings could be achieved through smarter scheduling, efficient methodologies and the use of alternative materials.

Whittens’ project team had a clear understanding of client Fortescue’s objectives, and maintained open communication with the client while creating a positive atmosphere. Through early identification of project risks, Whittens anticipated necessary actions and mitigation measures, reducing costs and avoiding disruptions.



LET US DO THE HEAVY-LIFTING, SO YOU CAN SPEND TIME

BUILDING MORE *family memories* THIS HOLIDAY SEASON

SAVE TIME WITH DIGITAL TIME CARDS

Notify workers of their shifts as soon as work orders are scheduled from the office. Confirm shifts, clock in and out, and fill out timesheets from the field. Or, submit time for an entire crew in less than a minute.

SAVE TIME ON PAYROLL

See the status of timesheets from the office, whether it's started, pending, or submitted. Create reports with time or pull that data automatically into your accounting or ERP software using one of our integrations.

SAVE TIME WITH AUTOMATION

Get time back in your day by automating the processes and jobs you do a lot. No more sifting through texts and emails. See where your resources are at a glance and make changes just as fast.



ASSIGNAR.COM
@ASSIGNAR

Assignar

See Assignar
in Action





Excellence in Civil Construction: Project value \$75-150 million (sponsored by PSC Insurance) – **Leach Highway and Welshpool Road Interchange, Leach Welshpool Alliance**

Main Roads WA's delivery methodology involved a sole-source Alliance Development Agreement phase, which allowed the early involvement of constructor Georgiou Group, designer BG&E, and geotechnical consultant Golder & Associates. This resulted in a range of beneficial value outcomes, including earlier design enhancements – such as a more efficient and sustainable roundabout design for Welshpool Road, replacing the original signalised diamond. Construction challenges and solutions included a non-traditional three-span post-tensioned bespoke tapered bridge over live rail. LWA created innovative temporary support systems across each stage of the bridge installation. LWA meticulously staged 32 traffic switches to ensure two lanes each way remained active on Leach Highway throughout construction.



Excellence in Civil Construction: Project value more than \$150 million (sponsored by Allwest Plant Hire) – **Forrestfield-Airport Link, Webuild-NRW Joint Venture**

Now known as the Airport Line, the \$1.86 billion project is the first new train line to be introduced into the Public Transport Authority network since 2007.

Construction involved two tunnel boring machines excavating directly under Perth Airport's runways, from High Wycombe to Bayswater, reaching around 27m below ground at its deepest point. The TBMs each spent approximately 900 days underground, placing more than 9000 concrete tunnel lining rings that had been manufactured in a local facility.

The project also delivered three new stations, three emergency egress shafts, 12 cross passages, two dive structures, rail infrastructure and systems.

The project did not stop at all through the COVID pandemic. Webuild-NRW effectively managed the global supply chain issues, delivering the project within budget.





Excellence in Civil Construction: Judges Award (sponsored by WARP Traffic Management) – Mitchell Freeway Extension, Mitchell Extension Joint Venture

The extension of the Mitchell Freeway in Perth's northern suburbs encompassed the 5.6km extension of the freeway, duplication of Wanneroo Road, new freeway access points at Lukin Drive, Butler Boulevard and Romeo Road, shared paths, underpasses, and a bridge over the Butler railway. Sustainability was a priority focus, with the joint venture engineering innovative solutions to reduce the project's carbon footprint. This included the first successful trial of EME2 sustainable asphalt for Main Roads WA, and sharing materials with METRONET's Yanchep Rail Extension project to reduce waste. Showcasing exceptional innovation and agility throughout the program, the JV employed cutting-edge techniques to optimise cost effectiveness for on-time delivery of a seamlessly executed project, with two major additions to the original scope.



NOMINATIONS OPEN SOON!



WESTERN AUSTRALIAN
CIVIL CONSTRUCTION
**INDUSTRY
& TRAINING
AWARDS**

NOMINATIONS OPEN
JANUARY 27, 2024

GALA DINNER
FRIDAY, APRIL 19, 2024

Go to www.ccfwa.com.au/Industry-&Training-Awards



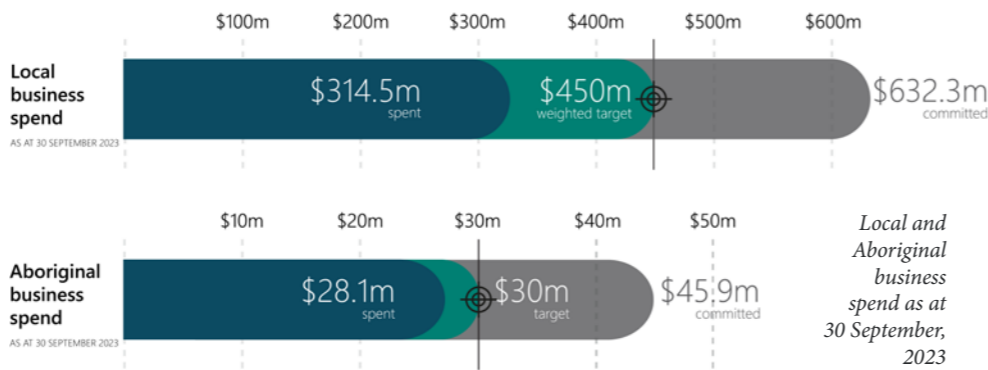
BORR is a road to new opportunities

Above: Melissa Riley's artwork, 'Djilba' (Spring) will welcome visitors to the South West as they transition to the Bunbury Outer Ring Road from Forrest Highway

The Bunbury Outer Ring Road (BORR) is the biggest infrastructure project ever undertaken in Western Australia's South West region. However, the state and federally funded project is more than just a road: the project is maximising local industry and Aboriginal participation and generating long-term employment, training and upskilling opportunities for previously unemployed job seekers.

The South West of Western Australia, a little pocket of our lucky country known for its breath-taking natural beauty, has seen remarkable population and industry growth over the last few years. With this increase in activity and traffic has come increased capacity requirements to service the needs of today, and planned development into the future. The need for the Bunbury Outer Ring Road has been identified in the Greater Bunbury Region Scheme for years; Its intent is to alleviate the pressure of development and align with the social and economic growth of the region. Construction of the Bunbury Outer Ring Road began slightly earlier than planned in January 2021 as a COVID-19 economic stimulus initiative. This \$1.25 billion, four-year project is realising 27 kilometres of high-standard rural roads and 28 kilometres of upgraded local roads. The new safer road system is designed to

reduce traffic congestion and reduce disruptive interaction between freight and local traffic in central Bunbury by providing a more efficient and direct route to Bunbury port. Offering more reliable journey times for all users – without the need to navigate one's way through 13 sets of traffic lights and a rail crossing – the new road



infrastructure will support the South West's continued growth and, in particular, the ongoing development of the industrial hub that is Greater Bunbury. A road project of this size and design was inevitably going to change the face of the South West, but even from its very conception the BORR project had to be more than just a road. High social and economic outcome targets were set to ensure that the local community – the ones who call the region their home in particular – were true benefactors of the investment in this infrastructure. To achieve this lofty goal, a very down-to-earth approach had to be taken: This began with Main Road's electing an Alliance contract procurement model and, after a competitive process, awarding the

"When I started the Yaka Dandjoo program, I had no idea I would end up where I am today. I have my first job working on the Bunbury Outer Ring Road, and I wouldn't change it for the world. I am so thankful I got given such a wonderful opportunity."

– Joanna, a 26-year-old local, Wadandi Noongar woman



contract to the South West Gateway Alliance (SWG) consisting of Acciona, NRW Contracting, MACA Civil, Aurecon and Aecom. This Alliance, including Main Roads WA, is delivering on all aspects of the project, from sourcing the over 7 million tonnes of sand required from local borrow pits to achieving sustainability goals aligned to the United Nations' Sustainable Development Goals. SWGA has focused its social and economic outcome objectives on three main areas: Gender inequality, socioeconomic inequality, and local economic sustainability. To this end, SWGA has committed to measurable results: 30% of its workforce being female, 10% of its workforce being Aboriginal, 10% of its workforce being previously unemployed individuals, and a minimum of \$450 million and \$30 million in procurement earmarked exclusively for South West and Aboriginal businesses respectively. These commitments presented the team with a unique challenge considering the location of the project. Industry sustainability on

large-scale regional infrastructure projects in WA has always proven to be more mountain than molehill and the South West is no different. A community population of around 120,000 and an Aboriginal population of approximately 5,000 all but guaranteed that local capital works capacity would fall short of requirements. Even the unemployment rates in the state were at historical lows at the time – reaching 2.1% at its lowest. Amongst the unemployed, a significant portion simply lacked the industry skills and experience for safe and productive hire on a road construction project.

To address the challenge, a differentiated approach to procurement was implemented. The "Inside Out" approach, as it was internally referred to, was a custom-built procurement strategy that addressed the entire supply chain. It included a Local Content Advisor, a Local Business Advisory Group, a ready-for-work, sustainable employment training program, and the establishment of an in-person 'community hub' and digital communication strategy. Through collaboration between Main Roads, Department of Primary Industry and Regional Development and the Alliance, a key factor of the local industry sustainability outcomes to date can be attributed to having a dedicated Local Content Advisor focusing on initiating and developing connections with local and Aboriginal businesses. Through a personable approach of one-on-one business engagements,



industry-wide business briefings and well over 80 advisory group meetings, the right type of local and Aboriginal business could be best matched with the right type of project tender package. The advisory group meetings similarly worked to provide advice and guidance on local business engagement strategies as well as relaying invaluable feedback to the team when delivery models needed to be adjusted.

In September 2023, the BORR project, which recently marked the 60 per cent completion milestone, has already committed \$632.3 million worth of contracts to local businesses and \$45.9 million to Aboriginal businesses.

The ambitious social impact targets saw the implementation of the sustainable employment training program, Yaka Dandjoo. This initiative focuses on providing unemployed youth, mature-aged, female, and Aboriginal people the chance to turn their life around through a ready-for-work program. In the two years since the career kick-off program's launch, 164 participants across 11 cohorts have graduated (57 per cent of whom are female and 54 per cent of whom are Aboriginal).

Of course, the social impact of a project of this size on landowners, community members, tourists and the local Noongar people is expectedly significant. As with all relationships, open and transparent communication has been key. To facilitate engagement with local residents and business owners a multi-channel digital engagement approach and physical hub were set up. The physical community hub remains located in the central district of Bunbury and an opt-in digital database enables consistent and direct access to current information. This is supplemented with a presence on the Main Roads website, Facebook and LinkedIn.

Aboriginal heritage and culture has also been celebrated and respected at all times. Working hand in hand with the Aboriginal

Heritage Advisory Group, activities of particular importance to the local Wilman and Wadandi people, such as ground disturbance monitoring beyond known heritage sites, celebrating local Noongar culture and heritage through dual river naming and integrated infrastructure artwork, and including the Heritage Advisory Group in temporary and permanent works related to bridge construction over important water courses has been conducted through the delivery of a holistically designed, leadership team led Aboriginal Participation Strategy.

As mentioned, the new road still has almost half of its journey ahead of it, but national recognition of its outcomes has already begun. On 7 September, at the 2023 Infrastructure Sustainability Council Annual Awards Gala, the BORR project team won two awards: One for Excellence in Social Outcomes and the other for Excellence in Economic Outcomes. Additionally, the project has been nominated for two categories at the upcoming Institute of Public Administration Australia's WA Achievement Awards on 7 December 2023: the Moore Australia (WA) Award for Best Practice in Collaboration Between Government and any other Organisation; and the award for Best Practice in Procurement.

Perhaps for some it is to be expected that a transformational infrastructure project of this kind would play an outsized role socially and economically. Nevertheless, the complexity and scope of BORR required some truly innovative, inside out thinking by Main Road, the Alliance and their advisory groups tasked with delivering it.

If you would like any more information regarding the BORR project, please contact 138 138 or enquiries@mainroads.wa.gov.au.

Prevent Injury

Boost Compliance

See Results

Providing your workplace with the essential tools for both alcohol and drug mobile testing

- ✓ Results displayed fast on-screen
- ✓ Clear, visual electronic display
- ✓ Cost-effective drug and alcohol testing
- ✓ High performance police/law enforcement devices
- ✓ Certified or Verified to the Australian Standard



Contact us for all your alcohol and drug testing requirements on 1300 789 908 or email sales.wa@alcolizer.com

Certified Product

Australian Standard AS3541 COMPLIANT

Certified System

Quality ISO 9001

Alcolizer technology

TRUSTED ALWAYS

BORR Project map

Northern project area (Stage 2)

- 1 Paris Road / Clifton Road interchange
- 2 Raymond Road interchange
- 3 South Western Highway (north) interchange
- 4 Discovery Road intersection
- 5 BORR overpass of Golding Crescent, Ferguson River, Freight Rail and Boyanup-Picton Road

Central project area (Stage 1)

- 6 Bunbury Outer Ring Road (Stage 1)

Southern project area (Stage 3)

- 7 South Western Highway (south) existing roundabout
- 8 Lillydale Road roundabout
- 9 Yalinda Drive overpass
- 10 Bussell Highway Y-interchange

LEGEND

- Bunbury Outer Ring Road new alignment
- Connecting road upgrades/construction
- Bunbury Outer Ring Road existing alignment
- Existing road closure
- Bridge
- New cul-de-sac

available at www.mainroads.wa.gov.au

28 #4 2023 | CCF WA BULLETIN

CCF WA BULLETIN | #4 2023 29

Women in civil inspire at NAWIC WA Awards

By Alice Graham.

Congratulations to the women in civil construction who picked up awards at the 2023 NAWIC WA Awards for Excellence on Friday, November 3. CCF WA Member Services Coordinator Kylie Bronleigh, Marketing and Communications Coordinator Alice Graham and Administrative Assistant Vanessa Caiulo were in attendance along with a total crowd of 750 guests for the lunch-time event. The annual occasion honours the remarkable accomplishments and industry advancements of women in construction in Western Australia.



L-R: Vanessa Caiulo, Alice Graham and Kylie Bronleigh.



The CCF WA team cheered extra loudly for the Tradeswoman of the Year Megan Larson and Business + Leadership Award winner Kate James, both from CCF WA Member DT Infrastructure. We were particularly proud to see women in civil celebrated by the broader construction industry. Ms James said: “When I started my career there were no female role models in senior positions, and even now there are few in operational roles. If I can be that person for one woman then I consider that a success and the journey worth it.” Ms Larson thanked NAWIC WA, her managers at DT Infrastructure, and recognised her kids in a LinkedIn post following the Awards.

CCF WA Member CPB Contractors also had cause to celebrate, with Safety, Health, Environment and Quality Behavioural & Systems Analyst Micaela Taljaard awarded a commendation for Achievement in Health, Safety and Social Responsibility. Master of Ceremonies Tina Altieri spoke to the winners on stage, who each humbly shared their incredible stories plus some relatable experiences on the job. The CCF WA team agreed hearing from the winners as they shared their challenges, triumphs and passion for their industry was a highlight of the afternoon. There is no doubt that women still face difficulties when they choose a career in construction; 75 per cent of women in the

industry said they had experienced gender-based adversity while working, according to NAWIC’s ‘State of the Industry’ Survey last year, and female representation in the broader construction industry remains low at 13 per cent. Still, taking time to celebrate female leaders and role models like Kate James, Megan Larson, and Micaela Taljaard makes it impossible not to feel hopeful that these statistics will improve, strengthening the industry with them.



DT Infrastructure General Manager Cormac Brady with Megan Larson and Kate James.



Awards MC Tina Altieri and Megan Larson.



Tina Altieri and Kate James.

SWITCH
between attachments
in a few seconds
without leaving the
excavator cabin

STEELWRIST
EARTHMOVING EFFICIENCY

See it
for yourself
at the TRS
Open Day on
21st March

The need for regular attachment
changes can be a time
consuming task.

With the **Steelwrist SQ Automatic
Quick Coupler** you can switch
between your hydraulic rockbreaker,
shears, grapple, sorting bucket,
compaction plate - in fact any attachment -
in a few seconds! – all without ever leaving the cabin.

The Steelwrist SQ automatic quick coupler is setting
the standard for fast, safe and convenient hydraulic
attachment changes.

Contact us for more details.

1300 921 498
sales@trswa.com.au
totalrockbreaking.com.au

Total
Rockbreaking
Solutions

ADVICE AND SUPPORT YOU CAN TRUST

Plant Hire:

Graders
Dump Trucks
Water Carts
Telehandlers
Final Trim Operators
Mobile Plant Operators

Dozers
Excavators
Water Trucks
Service Trucks
Wheel loaders
Topcon Survey Equipment

KAIS HIRE

Call Us Today on 9475 0800

SPECIALISTS IN EARTHMOVING • MINING • CIVIL CONSTRUCTION

501-507 Gt Eastern Hwy Redcliffe

WA Fuel Supplies makes fuel easy

Whether you need mini tanker refuelling on site or need bulk tank storage and supply options on your larger, remote projects, WA Fuel Supplies (WAFS) has the solution for you.

Established in 2015, WA Fuel Supplies is a 100% WA owned distributor of fuel and lubricant products. As the fastest growing distributor in WA, WAFS has one of the largest internal fleets delivering throughout metro and regional areas. With 22 trucks on the road at any one time and no reliance on third party deliveries, WAFS schedulers can meet your site needs and ensure you do not run out of fuel.

WA Fuel Supplies co-founder and Managing Director Andrew Glover explained, "WA Fuel is a customer-focused company that identified a niche within the petroleum industry outside of diesel simply being a price driven commodity. WAFS continues to build the business through the provision of a wholistic offering, whereby we ensure our clients receive the best ROI on their direct (fuel is supplied at the most economical price practicable) and indirect expenditure (if we provide an on-site refuelling service)."

Mr Glover went on to say, "WAFS growth within the WA market has been recognised by terminal owners, providing WAFS with

competitive pricing advantage that has allowed WAFS to pass these savings to our clients. WAFS now boasts a diverse client base including transport operators, civil contractors, quarriers, and multiple mining clients across WA and Victoria, delivering solutions from turnkey fuel farms through to supply of bulk diesel only options.

"With the owners actively involved in the business, WAFS are fluid in their decision making and can quickly act on our clients' requests. Unlike many of their competitors, our customers can contact the owners to work through any challenges and expediate a quick resolution."

WAFS delivers a variety of services, including:

- On site refuelling.
- Tank Storage options including fuel farms and standalone tanks.
- Fuel Management reporting capability.
- Bulk supply of diesel to the customers tanks.
- Supply of lubricant and AdBlue products.

Supported by an experienced operations team, in house haulage and a team of experienced dedicated Account Managers, WAFS has the supply volume and in house capacity to deliver a seamless solution to their clients across WA.

The CCF WA Energy Infrastructure Breakfast

On Thursday, November 9, Crown Perth's Astral Ballrooms were buzzing for the inaugural CCF WA Energy Infrastructure Breakfast. 200 guests joined us to hear from Western Power Executive Manager Asset Operations Zane Christmas and ATCO Australia General Manager of Hydrogen and Future Fuels Russell James.

With over 28 years' experience in managing electricity networks, Zane Christmas gave us his insights into the transformation of WA's power network as we pursue decarbonisation. Russell James provided

some expert insights on hydrogen's role in the transition to net-zero. Following the presentations, Western Power's CFO Jacqui Hall joined our speakers on stage to answer questions from our audience. The event was proudly sponsored by Monford Group supported by Acu-Tech Piping Systems and RSM Australia. To view the full album of photos from the event, visit our Facebook page at www.facebook.com/CivilConWA.

Event sponsors



MONFORD



WA represented at the 2023 National Earth Awards

WA's 2023 Earth Award winners Rob Carr and Water Corporation, Ertech, RJV, Whittens, Leach Welshpool Alliance and Webuild-NRW JV flew to Canberra for the National Earth Awards on Friday, November 10. Enviro Infrastructure were also national finalists, but couldn't be there on the night. We were especially proud to see Ertech take out the Award for Excellence in Civil: Project value \$5-10 Million for the Onslow Boating Precinct Stage 1A project. Ertech Senior Project Engineer Bradley Saunders accepted the award on-stage flanked by Executive General Manager Mick Unger.



The 2023 WA Earth Awards

The 2023 WA Earth Awards were a great success, with over 500 guests joining us to cheer on their industry, expand their networks and celebrate excellence in civil construction project delivery. The event was proudly supported by PSC Insurance along with Alcolizer Technology, Allwest Plant Hire, Brooks Hire, HiQA Geotechnical, Ledge Finance, Reece Civil + Viadux, and WARP Traffic Management. Thank you to all who attended and supported the Awards. To view the full album of photos from the event, visit our Facebook page at www.facebook.com/CivilConWA.

Event sponsors



EVENTS



Position Partners to deploy Teleo's autonomous heavy equipment technology

Position Partners will support customers looking to retrofit heavy equipment with Teleo's remote-operated and autonomous solutions across Australia, New Zealand and Southeast Asia.

Intelligent positioning solution provider Position Partners has announced an agreement with Teleo, a US-based company building autonomous technology for heavy equipment.

"With ongoing labour and skills shortages in the construction sector, there is more work to be done than there are people to do it," said Position Partners CEO Martin Nix.

"Automation and remote-control solutions from Teleo will help our customers to increase productivity with one operator capable of operating multiple machines in a safer, more comfortable environment."

With more than 30 years' experience fitting machine control solutions to all makes and models of heavy earthmoving equipment, Position Partners is well suited to deploy Teleo technology as the latest innovation for the construction and material moving sector.

Position Partners will offer the full Teleo solution to customers and support sales, installation and training in all countries the company operates in including Australia, New Zealand, Singapore, Indonesia, Malaysia and the Philippines.

"We are delighted to announce our agreement with Position Partners. Their skilled team will ensure the best outcomes for our mutual customers as they deploy Teleo's cutting-edge supervised autonomy solution," said Teleo Co-founder and CEO Vinay Shet.

Teleo's system can be retrofit to any make and model of machine and includes the company's proprietary software, a remote command



centre to operate the equipment, and a robust mesh network to enable two-way communication between the command centre and machines. The kit incorporates state-of-the-art sensors, including high dynamic range cameras that deliver high-definition visibility and video footage both day and night.

Once a machine is retrofitted with Teleo's technology, a skilled operator can control multiple machines, at multiple sites, from a single station. The technology brings the operator experience to the remote command centre by bringing the sound and feel of the machine into the room as if they were operating it in person.

The Teleo system introduces a host of benefits to customers, including:

- **Attracting more operators:** By transitioning these roles from the field to a remote command centre, Teleo is creating a safe and comfortable work environment. This makes the role of the operator more attractive to the next generation, making it easier to recruit, train and deploy skilled employees, while also making the job more accessible.
- **Increasing site productivity:** Multiple machines, across multiple sites, can be controlled simultaneously by one operator. Productivity is increased by letting operators virtually switch between machines, reducing downtime between breaks and shift changes on large sites.
- **Enhancing operational visibility:** With Teleo Insite, the company's data and analytics platform, Teleo offers customers unprecedented visibility into daily operations, including a live operating view, camera recordings, operations statistics and more. With the data, customers can get ahead of the curve and continuously improve job site productivity.
- **Increasing Safety:** Working from the protected environment of the remote command centre, operators are now removed from harm's way, keeping them safe and productive. It also reduces the long-term effects of exposure to harsh elements such as machine vibration, noise and particulate matter.

For more information, please contact Position Partners on 1300 867 266 or visit www.positionpartners.com.au

Monford Group opens new national headquarters

Monford Group, a CCF WA Contractor Member and leading EPC contractor in the infrastructure, resources, and energy sectors, is proud to announce the official opening of its new national headquarters, Monford House, located in Perth's central business district on 239 Adelaide Terrace. Monford Group occupies the entire top floor, which is approximately 1000 square metres. This strategic relocation marks a significant milestone for Monford Group, as the company moves up a gear and reaffirms its commitment to providing outstanding service to its clients while fostering continued expansion and growth. Situated with commanding views overlooking the iconic Swan River, Monford House will serve as the epicentre of Monford Group's national operations. The decision to move the company's headquarters to this prime location is a result of careful consideration and reinforces Monford's commitment to being more accessible and responsive to its clients' needs. Monford's current projects in the infrastructure, resources and energy sectors span across Australia, with international and national clients and supply chain partners. By establishing Monford House in Perth's CBD, Monford is well-positioned to serve its clients even more effectively, reaffirming the company's dedication to delivering exceptional construction and engineering solutions. This move also underscores Monford Group's eagerness to welcome both clients and staff into a modern, collaborative workspace designed to promote innovation and teamwork. The office layout has been carefully planned to encourage greater synergy among the Monford team. It also highlights the company's commitment to creating a more unified work environment and provides the additional space the company requires to continue its outstanding growth. In addition to bringing the company's people closer to its clients, Monford's relocation to the CBD is also in line with its sustainability initiatives. The move places the business in proximity to public transport options, making the daily commute for staff more efficient. By reducing its carbon footprint, Monford Group hopes to demonstrate its dedication to environmental stewardship and a greener future.



"We are thrilled to embark on this exciting new chapter for Monford Group. Monford House symbolises our dedication to excellence, collaboration, and sustainability," Monford Group CEO Peter Moore said.

"This strategic relocation is a testament to our commitment to our clients, our team, and our sustainability focus. Monford House will provide better access to public transport and city amenities for our people, clients, and supply chain partners. With our expanding operations, the new facility will provide the additional space we require to continue our growth in EPC, Design and Construct and Construct only projects throughout Australia. We eagerly look forward to welcoming both existing and new clients to our new national headquarters."

This announcement comes just weeks after Monford Group's expansion in the Pilbara region, as the company proudly unveiled its newly acquired and larger premises in Karratha, which will serve as the Pilbara Region base of operations. The addition of this substantial facility represents another strategic step for Monford Group and bolsters its presence in the Pilbara, allowing the company to better serve its clients in the region.

Mr Moore, who recently visited the new Karratha facility along with CCO Ciaran Shannon and Operations Manager Lee Stewart, said: "Monford Group has been operating in the Pilbara for over a decade. We have successfully completed many complex civil and resources projects during this time. This new facility will allow Monford Group to continue to service our clients in the Pilbara region. We have a solid pipeline of secured projects in the Pilbara over the next few years including several renewable energy projects, and this facility will enable our resident staff in Karratha to expand and continue to operate in our regional office in the Northwest of Western Australia."

If you'd like to visit Monford Group at the newest offices in Perth or Karratha and explore how Monford can elevate your next project, please visit: www.monfordgroup.com/contact-us



Peter Moore, Ciaran Shannon and Lee Stewart at the new Monford Group Karratha facility.

Brooks Access green Genies

With the construction industry aiming for a goal of net zero by 2050, Brooks Access is supplying their clients with zero emission equipment to help reach that goal.

Electric and hybrid equipment represents a transformative leap in the construction industry, offering a promising solution to address the challenges of sustainability, emissions reduction, and operating efficiency. By investing in renewable energy infrastructure, Brooks Access is providing a solution that not only lowers their clients carbon footprint, but also achieves long-term cost savings.

New to the Brooks Access fleet are the Genie Z-60FE and Z-45FE articulated booms. Like two machines in one, the FE models are the first articulated booms by Genie that operate fully electrically. The ‘full electric’ mode can run for a full day, emission-free on a single charge. The ‘hybrid’ mode offers a full week of runtime on a single tank of diesel, which is very efficient compared to most diesel equipment. When in hybrid mode, the diesel engine operates at optimal efficiency, charging the batteries at the same time, which then power the electric components of the machine.

Brooks Access Workshop Foreman Luke Johnston explained the motor in more detail.

“If the machine is under 85% battery power, and you have it in hybrid mode, the engine will kick on when it needs to and charge it back up to 85%, then turn off again,” Mr Johnston said.

“While it’s doing this, you can continue to drive and operate the machine, while charging the batteries all at the same time.”

An added bonus to the FE models is that the AC motors are fully submersible. The oscillating axle enables the machine to traverse over uneven terrain and keep traction and stability for safe operation. Fitted with rough terrain tyres, the Genie FE models are extremely versatile in all environments.

“You can drive the machine up and down any slope, in any drive



mode because they have full torque at all times,” Luke said. “With other machines, if you’re out of stow, their oscillating axle locks, which means if you drive it over a hole, that wheel won’t fall in the hole, however if you slew the machine the other way, it can pick up the opposite wheel. In my opinion, this makes the Genie FE machine much nicer to use,” Luke continued.

Another benefit of using electric equipment is noise reduction. This is particularly beneficial on construction sites in built up areas. The Genie FE models are extremely quiet machines. When used in electric mode, the Genie FE could easily be used on a Sunday morning in the suburbs and the neighbours wouldn’t even hear it.

Brooks Access has added several Genie hybrid articulated booms to their hire fleet. They can also offer clients solar panels, and battery storage systems making their entire work site emission free.

To hire emission free access equipment on your work site, call Brooks Access on 1300 276 657 or go to brooksassess.com.au.

Total Rockbreaking Solutions and Steelwrist sign distribution agreement for WA market

Total Rockbreaking Solutions has signed a distribution agreement with Steelwrist for the Western Australian market, for sales and support of Steelwrist products.

Total Rockbreaking Solutions has a strong and loyal customer base built on knowledgeable and reliable service in the Western Australian market. They provide solutions to mining and construction contractors and also all of the major excavator manufacturers across many different applications including civil and demolition. With an extensive experience in the local market and with a customer base and contacts across the machine dealer network, this partnership promises to deliver exceptional products and customer service to the region.

Initially, the focus will be on the introduction of Steelwrist Automatic Oil products to the existing clientele. Steelwrist Australia will work closely with Total Rockbreaking Solutions to support the business development. Total Rockbreaking Solutions will ultimately be stocking Steelwrist parts and products in their Kewdale facility, with shipping support from Australia and Sweden.

“The civil construction, demolition, and mining markets in Western Australia are starting to discover the advantage of introducing more productivity into an excavator and this is where Steelwrist products and our partnerships become so important. We have had reasonable success in Western Australia but



having a sales and support partner like Total Rockbreaking Solutions, who are already active in these markets, will only add to our success in this region,” said Darryn Wilson, Steelwrist Australia Managing Director.



“At Total Rockbreaking Solutions, we believe our clients deserve reliable, quality products which is why we are very proud to have been appointed as WA’s authorised dealer for the Steelwrist products,” said TRS Sales Manager Jeff Jackson.

For more information, please contact Steelwrist Australia Managing Director Darryn Wilson at darryn.wilson@steelwrist.com, 0419 667 532, or Total Rockbreaking Solutions Sales Manager Jeff Jackson at jeff.jackson@trswa.com.au, 0417 451 401.

Thank you to our valued **2023-24 CCF WA Partners**





got news?
share it!

The article above, like most editorial content in this magazine, is published free of charge as a benefit of CCF WA Membership. Members can send through news at any time for inclusion in our next CCF WA Bulletin. This could include project profiles, new products, appointments, innovations, expert comment + images.

Send through your copy and/or photos via email to ccfwa@ccfwa.com.au.

free + exclusive
to Members

Welcome new members



Benang Energy Infrastructure

www.benangenergy.com.au

Benang is a Leading Infrastructure, Energy and Smart Technology Service Provider. We offer a comprehensive range of construction, maintenance and operational services to the utility infrastructure industry. Remember, every task we undertake is centred around quality. Quality people. Quality processes. Quality outcomes. Benang constructs and maintains safe and sustainable power systems and multi-utility networks for utility authorities and owners of energy, mining and other infrastructure assets.

Mitsubishi Motors Australia

www.mitsubishi-motors.com.au

Mitsubishi Motors Australia Ltd. (MMAL) enables people and businesses to drive their ambition through the technology, design and product advantages in our range of cars, SUVs and utes. With a network of around 200 dealers and service centres across Australia, you are never far from a Mitsubishi Dealer.

Oakwood Consulting

www.oakwoodconsult.com.au

A well-defined contractual and commercial strategy is imperative for the successful execution of any project. Oakwood Consulting provides contract and commercial management services, claims advice, expert witness, and audit and training services to clients across the resources, construction, infrastructure, and energy sectors. Oakwood Consulting is an independent firm that provides a focused approach that places the client's needs and aspirations at the forefront of what they do, and, to support this, their team provides a peer-leading service underpinned by experience, industry accreditation and independence.

Pave Mix Civil

www.pavemix.com.au

Pave-Mix has been providing first-class site and property development services in Perth since 1977, from driveways and kerbing to tennis court construction and stormwater drainage. We offer a diverse range of services to residential, commercial and government clients throughout Perth and are renowned for our extremely high standards and versatility. We work closely with our clients to determine their specific needs and deliver each project in a timely and cost effective manner.

Rix Asset Maintenance

www.rixam.com.au

RIX Asset Maintenance (RAM) specialises in providing innovative rope and difficult access solutions. From slope stabilisation and rockfall protection to mining to maintenance and ground engineering, our team has the skills and equipment to support your project. We find slope-stabilisation solutions that keep people and assets safe.

WA Underground Services

www.waunderground.com.au

Founded in 2022 by Luke Grant, WA Underground has quickly made its mark for its work in underground power and communications. Whether it's a small excavation or a complex project, the team aims to get it right the first time with a focus on quality and integrity. The team knows that reputation is built one project at a time, and they're committed to making each one count. Clients can expect a safe, quality service that always aims to exceed expectations.

Worrells

www.worrells.net.au

We are insolvency and turnaround teams who help both companies and individuals to recover from difficult business or personal financial situations and assist the creditors attached to these matters. When this can't be achieved, we help wind down operations or manage personal insolvency procedures, and recover secured debts with expert knowledge, delivered with thought and care. The Worrells Group is a group of independent members firms.

About CCF WA

The Civil Contractors Federation is Australia's peak civil construction industry body. As the voice of the civil construction industry we advocate on behalf of the industry to all levels of government. With branches in all states and territories, as well as a National Office in Canberra, CCF understands the local, state and national issues facing the civil construction industry.

CCF has two types of memberships. Contractor Members, who undertake work as civil construction contractors in the civil construction industry; and Associate Members, who provide goods and services to the civil construction industry, or are industry stakeholders (e.g. Govt bodies).

In Western Australia, CCF WA works to ensure:

- You are represented and advocated for – heard at a local, state and national level.
- You are informed – provided with sound advice and the latest information.
- You are equipped – with access to tools and resources that help your business succeed.
- You are connected – our events and publications bring you together with useful contacts, suppliers and each other.

CCF WA Membership ensures your business is part of the industry's united voice on civil contracting matters.

CCF WA works closely with state and local governments, and key private sector clients, to address key issues and improve the operating environment for contractors and suppliers. We have strong networks and access to key decision makers at major infrastructure delivery agencies.

CCF WA is committed to ensuring the civil construction industry is professionally represented. It does this by:

- consulting with industry on key issues affecting the industry.
- representing the industry on government and industry panels and working groups.
- advocating to all levels of government and the private sector through multiple channels.

Western Australian
Civil Construction Industry

Suppliers Guide

(Directory of CCF WA
Associate Members)

2023-24



CIVIL CONTRACTORS
FEDERATION

CCF WA's eleventh annual Western Australian Civil Construction Industry Suppliers Guide includes contact details, profiles and capabilities of 103 CCF WA Associate Members. By supporting their industry group, these companies are demonstrating their commitment to a strong, sustainable and equitable civil construction industry in our state.

(Photo: CCF WA Member Holcim supplied concrete for Ertech's AMC 1 Wharf Extension project)

A1 PLANT HIRE

www.a1planthire.com.au

Ross O'Donovan, Operations Manager
(08) 6252 1443 | 0499 592 005
ross.odonovan@a1planthire.com.au
214 Maddington Road, Maddington WA 6109

A1 Plant Hire has been operating across WA and Australia for nearly 20 years. Built on a solid foundation of catering to the growth needs of our clients, and turning them into repeat customers. Our fleet has expanded by purchasing new & low houred, project specific plant & equipment to meet our clients' needs. We know how important it is to keep your project running, and we have the highly skilled personnel to drive and maintain it, wherever it is in this massive country or ours. If there's plant & equipment or manpower your project needs, speak to us and we'll work together to make it happen.



ABAXA

www.abaxa.com.au

Robert Osborn, Executive General Manager
1300 369 642
enquiries@abaxa.com.au
202/26 Charles Street, South Perth WA 6151

Abaxa is Western Australia's largest utility location and survey company, with over 30 years of industry experience. We are capable of providing a complete service from design inception/early planning, through to construction completion. Abaxa protects people and infrastructure by reducing asset risk. Our accredited, specialist team are experts in utilities locating, survey, supervision, SUE, pipeline maintenance & surveillance. Abaxa is Accredited to ISO9001 Quality, ISO 45001 Occupational Health and Safety including ISO14001 Environment, providing quality people, proven processes, and the credibility of working with the market leader.



ACU-TECH PIPING SYSTEMS

www.acu-tech.com.au

Adrian Culff, Business Development Manager
Simone Dow, Client Service Executive
Sophie Robson, Client Service Executive
(08) 9238 8000
119 Kelvin Road, Maddington WA 6109

Acu-Tech Piping Systems is an Australian manufacturer and supplier specialising in complete polyethylene (HDPE) pipe systems and solutions for fluid and gas transfer and cable protection. Manufactured primarily from polyethylene (PE) polypropylene (PP) thermoplastics, Acu-Tech Piping Systems incorporate the most innovative and advanced pipe system technology available. Built on nearly 50 years of industry research and innovation, our systems are utilised in a wide range of applications across the civil sector. We have a track record of exceptional performance and durability in many demanding applications, providing engineers and contractors with high integrity and cost effective solutions. Our team are here to provide the highest quality service and support at every stage of your project. Providing comprehensive piping solutions, we are one of the most trusted poly pipe manufacturers across Australia with branches in Perth, Kalgoorlie, Melbourne, and Brisbane. We are able to supply our customers from large inventories, ensuring smooth and efficient supply of products during your project. With decades of combined experience and a positive 'can do' culture, the people behind Acu-Tech Piping Systems are committed to ensuring the long-term success of your business.



ADT WESTERN AUSTRALIA

www.adtaustralia.com.au

Darryl Moore, General Manager
(08) 9434 4566
sales@adtaustralia.com.au
230 Barrington St, Bibra Lake WA 6163

ADT Western Australia is a local West Australian company established in 2004. Built on a foundation of extensive earthmoving and heavy machinery experience, it supplies to industries including construction, earthmoving, rail, quarrying and mining. Commencing as a dealer for Moxy, the Norwegian brand of articulated dump trucks, (becoming Doosan in 2008) it continued to evolve in subsequent years. ADT WA has expanded to include the innovative range of Hydrema earthmoving equipment: Compact Articulated Water Carts, Compact Articulated Dump Trucks, Reduced Tail Swing Wheeled Excavators, Articulated Backhoe Loaders, Hi-Rail Excavators and Dump Trucks. ADT WA is focused on delivering quality and unique products relevant to the Australian market. Our dedication, local industry knowledge, innovative customisation and the strength of the international brands we represent combine to provide precise machinery solutions backed up by ongoing, responsive customer support.



AFGRI EQUIPMENT

www.afgri.com.au

James Mckillop, General Manager - Construction & Forestry
Leigh Esplan, Sales - Eastern Region - Construction
Damon Pavlinovich, Sales - Northern Region - Construction
Paul Casagrande, Sales - South West Region - Construction & Forestry
(08) 6278 7100
info@afgri.com.au
80 Great Eastern Hwy, South Guildford WA 6055

AFGRI Equipment are the official partner of John Deere Construction & Forestry equipment in Western Australia. With dedicated sales, service and parts support, we are proud to partner with our customers and make sure their needs are met. Our extensive construction range features graders, skid steers, compact track loaders, backhoes, dozers, excavators, ADTs and wheel loaders whilst our forestry equipment includes harvesters, skidders, forwarders, swing machines and feller bunchers. At AFGRI Equipment, we are your partner for life. Our premium John Deere equipment is designed and engineered to help you make the most of your operation.



ALCOLIZER TECHNOLOGY

www.alcolizer.com

Katya Sawyer
Natasha McCulloch
Jared Pettinger
(08) 9230 7866
katya.sawyer@alcolizer.com
36 Mumford Place, Balcatta WA 6021

Alcolizer Technology is a world-leader in the field of Alcohol and other Drugs testing and is recognised as one of Australia's most innovative and forward-thinking companies. Headquartered in Perth, Western Australia, Alcolizer Technology is one of the world's leading manufacturers of alcohol breath testing and drug test devices. For over 30 years law enforcement agencies, industry and personal users trust Alcolizer to keep themselves and their employees safe. Alcolizer Technology is the largest provider of Breath Testing devices to Australian Law enforcement and the largest provider to the Australian Resources sector. Our products are designed in Australia, for Australia and exported around the world wherever people value quality, reliability and innovation. As our company name implies, we started out in alcohol breath testing and thanks largely to a series of key technological innovations we revolutionised the scope and accuracy of the alcohol breath testing industry. Alcolizer Technology has also expanded into manufacturing of drug testing devices and is bringing the same technological advances to this industry with world class innovation and market leading solutions. At Alcolizer Technology we believe alcohol and drug testing is critical for personal safety and a safe and productive work place.



ALLWEST PLANT HIRE

www.allwestplanthire.com.au

Ian Priday, Managing Director
(08) 9399 2243
ian@allwestplanthire.com
33 Edison Circuit, Forrestdale, WA 6112

Established in 2005, Allwest Plant Hire is a family owned and operated hire provider of heavy earthmoving plant and skilled operators. With a well-maintained fleet, and a highly skilled and experienced team, we have earned an impressive reputation for our ability to mobilise machinery throughout the state with efficiency and ease. Over 250 items of equipment are available for dry hire ranging from excavators up to 50t, dumpers up to 40t, graders, loaders, telehandlers, positracks, padfoot and smooth drum rollers. We can supply our equipment for wet hire with a skilled operator. We can also supply operators for your range of equipment. Generators, air compressors, compaction equipment, light towers, and many other types of smaller equipment are available for hire.



ASSIGNAR

www.assignar.com

Trent McCreanor, Global Head of Sales
(02) 9199 7477
marketing@assignar.com
1/276 Pacific Highway, North Sydney NSW 2060

Assignar is the operations platform for civil contractors. Schedule crews and equipment, manage compliance quality and safety and monitor progress from a single platform. Assignar's fieldworker app allows workers from the field to send through field data such as timesheets, SWMS, pre-starts and site diaries in real-time, connecting your field crews and office team for more streamlined operations.



AUSTRALIAN CIVIL HAULAGE

www.australiancivil.com.au

Wayne Batson
(08) 9475 6555
accounts@australiancivil.com.au
20/28 Belmont Avenue, Belmont WA 6104

Australian Civil Haulage Pty Ltd is a Western Australian owned and operated company providing logistical support solutions to the civil construction industry. With over 100 years of combined experience we can provide high-quality personnel and equipment to deliver a diverse range of solutions to match the needs of large, medium or small scale projects.



AUSTRALIAN VISA PROFESSIONALS

www.avpmigration.com.au

Craig Hardman, General Manager
Nigel Sanders, Managing Director
(08) 9221 5888
info@avpmigration.com.au
Suite 20, Mint House, 326 Hay St, Perth WA 6000

Australian Visa Professionals (AVP) specialises in providing visa solutions to corporates and sponsored employees across industries. And, while we're a leader in the 'trades' space, we can assist everyone from business owners and investors looking for opportunities in Australia to skilled professionals and tradespeople migrating from other countries, and families being sponsored by Australian relatives.



BA EQUIPMENT GROUP

www.baeg.com.au

Robert Lake, WA State Manager
(08) 9248 9800
breakerswa@baeg.com.au
71 Prestige Parade, Wangara, WA 6065

With a complete range of products to suit any application or budget, our experienced teams put their full focus on servicing our attachment customers in the civil construction, demolition, quarrying and mining industries. We offer out of our modern facilities in Wangara WA and Acacia Ridge QLD a comprehensive sales, hire, service and parts offering that is second to none.



BEFORE YOU DIG AUSTRALIA

www.byda.com.au

Justin Scotchbrook, WA Territory Manager
(08) 9329 0602
bydawa@byda.com.au
77 North Lake Road, Myaree WA 6154

Before You Dig Australia (BYDA) is the national organisation for Before You Dig members. We provide the free pre-excavation referral service for the Australian community where those working near underground infrastructure can obtain plans & safety information from underground asset owners without needing to contact utility organisations individually. Using our service before any excavation project is essential for protecting workers and preventing damage & disruption to vital services such as electricity, gas, telecommunications, and water.



BGC QUARRIES

www.bgc.com.au/bgc-quarries

Nigel Salter, General Manager
(08) 9572 6088
quarry@bgc.com.au
PO Box 1257, Midland WA 6056

Producing more than 500,000 tonnes of crushed aggregate a year, BGC Quarries is a major supplier to the civil engineering industry and government authorities.



BLUE DIAMOND MACHINERY

www.bluedm.com.au

Mark Davis, National Sales Manager
1300 998 647
9 Valentine Street, Kewdale WA 6105

Having started as a small generator sales company in Perth in 2012, Blue Diamond has quickly grown to become a leading national independent equipment distributor. With major operations in Perth, Melbourne and Brisbane we are the exclusive national distributor for leading Japanese brand Denyo Generators and Italian brands Rotair portable Air Compressors and Italtower lighting towers. Blue Diamond's core strength lies in our ability to supply high quality equipment at extremely competitive pricing, along with industry leading support. Trusted by major mine sites, Tier 1 rental and construction companies you can be assured you are getting the right equipment and right advice for your fleet or project.



BOYA EQUIPMENT

www.boyaequip.com.au

Ben Parker, General Manager
(08) 9302 2006
boyaequip@boyaequip.com.au
2 Prestige Parade, Wangara WA 6065

Boya Equipment is the largest and most reliable Kubota dealership in Western Australia. Located in Wangara, just a half-hour drive from Perth, Boya Equipment has a wide range of Kubota construction machinery; from articulated loaders, excavators, and hammers amongst other heavy equipment. With an on-site pit, our customers are always welcome to test drive any of our construction equipment before making any purchasing decisions. Our commitment to providing excellent service in machinery, accessories, Kubota spare parts, as well as support to the agricultural, horticultural, and construction industries across Perth and rural areas, stems from the belief in our products, and years of industry experience.



BROOKS HIRE

www.brookshire.com.au

Stuart Brooks, Managing Director
Lenore Brooks, Chief Business Officer
1300 BROOKS (276657)
sales@brookshire.com.au
30 Coulson Way, Canning Vale WA 6155

Built on a foundation of 42 years' experience in the industry, the Brooks group of companies comprises nationally operating hire, sales, and transport divisions, specialising in the dry hire of heavy construction and earthmoving equipment, as well as access equipment, site services, and transportation services. Our modern fleet of machinery is serviced and maintained in line with OEM guidelines, and is backed by trade qualified heavy diesel mechanics, on call 24/7. Project Specialists provide end-to-end solutions for your project from start to finish. Our reliability and trusted reputation has seen the company grow to include 19 branches Australia-wide, and has provided the buying power to purchase brand new equipment for our clients as they require them. We have every confidence that we will be able to deliver the reliable equipment that you need for your next project. Brooks Hire is certified to ISO 9001, ISO 14001, and ISO 45001.



BUNBURY MACHINERY

www.bunburymachinery.com.au

Darren Pulford, Branch Manager
Nigel Trigwell, Hire & Trade Sales
Ben Johnston
Gary Gislingham
(08) 9792 3923
Picton Road, East Bunbury WA 6230

Bunbury Machinery is a major supplier of construction and agricultural machinery for purchase or dry-hire. Backed up by industry-leading knowledge, service and repairs, Bunbury Machinery is one of the most reliable machinery outlets in the South-West. We will get your machine back to work in the quickest time possible, as we understand the importance of a quick turnaround. With the combined training and experience of our team, and the support of our suppliers, we are able to efficiently and professionally service and repair all of the machinery that we sell. We identify and supply you with the right parts, no matter what the make or model of the machine.



CAPITAL CONSULTING INTERNATIONAL (CCI)

www.cci-int.com

Simon Russell, Regional Director - WA & SA
Alan Leonard, Director - WA
Simon Lowe, Managing Director - APAC
James Funge, Managing Director - APAC
(08) 6383 6227
APEnquiries@cci-int.com
Level 8, Suite 1, 167 St Georges Terrace Perth 6000 WA Australia

Capital Consulting International (CCI), a Rimkus company, is an independent global consultancy whose experts advise the insurance and construction industries on delay/time, quantum/cost, technical, and project management issues. Our more than 300 consultants bring clarity and resolution to some of the world's largest and most complex insurance claims and construction disputes. We operate from 21 offices worldwide and, with more than 40 years' experience in these fields, and bring multidisciplinary knowledge and experience to bear on construction and engineering questions. As claims become more complex, the level of technical input required increases. CCI employs, among others, project managers, quantity surveyors/cost consultants, and engineers who communicate effectively to help bridge the gap between construction and insurance.



CARBON LEASING & RENTALS

www.car-bon.com.au

Raphael Abadi, Business Development Manager - Novated Leasing
Carol Wallbank, COO/Executive General Manager
Baris Dilaver, Government & Stakeholder Manager
1300 113 477
info@car-bon.com.au
329 Hay St, Subiaco WA 3008

CarBon is Australia's first purely Electric Vehicle Leasing, Subscription & Rental company. We connect with EV manufacturers and new energy technology participants from across the globe to provide affordable, best in segment vehicles for the Australian market. CarBon is partnering with organisations from a range of industries to decarbonise transport and reduce carbon emissions. As specialists in green leasing, rental and vehicle subscription, CarBon also offers education, advocacy and information for individuals, groups and businesses wanting to learn more about transitioning to EVs. By harnessing the latest EV technology and teaming up with the logistics industry, CarBon is driving a profound shift in the way we move goods, services and people as it creates a new pathway for sustainable business in Australia.



CBUS SUPER

www.cbussuper.com.au

James Moore, Senior Employer Engagement Manager
0437 688 538
james.moore@cbussuper.com.au
Level 1, 82 Royal Street, East Perth WA 6004

Cbus Super is the leading super fund for the construction, building and allied industries. With a focus on providing strong retirement outcomes for members and helping employers manage their business superannuation needs, we welcome the opportunity to visit your site or office to provide education sessions and general product advice. To arrange a visit please reach out to James Moore.

This information is general in nature. It doesn't account for your specific needs. Please look at your objectives and business requirements and seek financial advice before making financial decisions. Read the Employer Handbook, Cbus Industry Super Product Disclosure Statement (PDS) and Target Market Determination to decide what's right for you. Call 1300 361 784 or visit cbussuper.com.au for a copy. United Super Pty Ltd ABN 46 006 261 623 AFSL 233792 as Trustee for the Construction and Building Unions Superannuation Fund ABN 75 493 363 262 (Cbus and/or Cbus Super)



CIVIL TRAIN WA

www.civiltrain.com.au

Karyn Grant, Operations Manager WA
(08) 9417 1980
courseswa@ccfsa.com.au
70 Verde Drive, Jandakot WA 6164

Civil Train WA commenced civil construction training in July 2018 to meet the needs of the CCF WA members and the predicted boom in construction works within Western Australia. Civil Train WA conducts training from the CCF WA facilities in Jandakot and onsite throughout Western Australia. Offering accredited and non-accredited short courses, such as Water Corporation of Western Australia's PVC Pipe Laying course, traffic management, plant tickets, and civil construction traineeships.



CJD EQUIPMENT

www.cjd.com.au

(08) 9277 0111
perth@cjd.com.au
52 Great Eastern Highway, South Guildford, WA 6055

Founded in 1974, CJD Equipment is a privately owned Australian company and leading provider of world class equipment and trucks. Partnering with international manufactures, CJD Equipment offers a diverse range of superior products from iconic brands such as Volvo Construction Equipment, SDLG Construction Equipment and Kenworth and DAF trucks. CJD's branch and dealer network spans the country from Australian capital cities to regional country towns, providing 24/7 sales, parts and service support from over 500 highly experienced staff with knowledge and skills that is unsurpassed in the industry. Big Enough to Trust, Small Enough to Care – CJD strongly believe the only way to do great work is to love what you do and are passionate about supporting customers for the long haul.



CLARK EQUIPMENT

www.clarkequipment.com

Steve Micah, Major Account Manager
Michael Curtain, Regional Manager (MHD) WA & NT
(08) 9493 3433
steve.micah@clarkequipment.com, michael.curtain@clarkequipment.com
1711 Albany Highway, Kenwick WA 6107

Clark Equipment brings the big names in equipment to the construction, infrastructure, agricultural, mining, materials handling and logistics sectors of our economy. As both a manufacturer and distributor, we know what is required to make equipment work. We have the on-the-ground distribution supplying the best of equipment; parts support with a Central Parts Distribution availability rate of almost 90%; service support from modern workshops, factory-trained technicians, a fleet of mobile service vehicles, and authorised service agents; and comprehensive equipment financing and rental options.



CLOVER PIPELINES

www.cloverpipe.com.au

Pat McCaffrey, General Manager
Jess Irvine, Client Services
0455 333 744
10 Radich Chase, Wangara WA 6065

As Australia's most complete supplier of pipeline infrastructure products, we offer unbiased consultation that always considers the context and challenges specific to your project. We provide a comprehensive range of industry leading PVC, Ductile Iron, Polyethylene, Mild Steel and Glass Reinforced Polyester pipe, fitting and valve solutions so we can best serve our clients across Australia and the Asia Pacific region. Our complete product suite allows us to remain nimble in response to unique requirements, resulting in a custom solution that focuses on unbiased, best-practice design without a preference for what we have on hand. We leverage our range to specify the optimal products for your system: our products don't just satisfy baseline requirements, they create value in their implementation as a whole solution.



COFFEY TESTING

www.coffeytesting.com

Franco Harkins, General Manager WA
Carl Witherspoon, Technical Sales Manager
(08) 6466 2400
contactus@coffeytesting.com
269A Treasure Road, Welshpool WA 6106

At Coffey Testing, we provide quality assurance and independent geotechnical testing to our clients in the most efficient and commercial manner. Aggregate, concrete and soil testing requires a diligent approach and focus to ensure accurate results. We have over 25 locations Australia wide including remote project laboratories. We have 60 years’ experience working on small, medium, and large sized projects across all sectors of construction including civil.



CONNECT RESOURCES

www.connectresources.com.au

Niall Kilcoyne, General Manager
Dan Norton, Managing Director
(08) 6180 8175
info@connectresources.com.au, niall@connectresources.com.au
1A/37 Hector Street, Osborne Park WA 6017

Connect Resources is a specialist provider of recruitment and labour hire solutions in Western Australia. Our recruitment team have a combined 15+ years’ experience recruiting for local roles in Perth and FIFO roles in regional WA, specialising in labour hire and permanent placements for the Civil Construction; Construction; Mining; Warehousing & Logistics; and Professional industries. Connect Resources works to get the job done with a focus on safety and open communication.



CONSTRUCTION TRAINING FUND

www.ctf.wa.gov.au

Tiffany Allen, Chief Executive Officer
Rob Berryman, Director Skills Development
(08) 9244 0100
info@ctf.wa.gov.au
104 Belgravia Street, Belmont WA 6104

Construction Training Fund is creating a skilled and sustainable workforce for the Western Australian building and construction industry. We collect a training levy and use it to reduce the cost of training a diverse, job-ready workforce and educate the next generation about the variety of exciting roles and opportunities on offer in our industry.



CR KENNEDY

www.crkennedy.com.au/survey

Jeff Hugo, WA State Manager - Survey Division
(08) 9489 8500
jeffhugo@crkennedy.com.au
Unit 1, 5 Gibberd Road, Balcatta, WA 6021

C.R. Kennedy is the sole and exclusive distributor in Australia for Swiss giant Leica Geosystems and distributor for other leading manufacturers and brands. A significant aspect of our offering is that we have access to partners around the world where we can source the latest in high tech spatial measuring equipment and related software solutions. The list includes machine control, land surveying equipment, unmanned aerial vehicles (UAVs), high-definition 3D scanners, underground service locators, ground penetrating radar, and an extensive array of software packages to suit the equipment and the application. To support our valued clients and customers C.R. Kennedy now employs over 280 people. All our product specialists, qualified surveyors, support staff and factory trained service technicians can advise on the best solutions and provide customers with the absolute best equipment for their needs. Customers have support and service from an unmatched national network.



DAVID MOSS CORPORATION

www.davidmoss.com.au

David Walton, Technical Sales Executive Civil & Infrastructure
Derek Gallagher, Director - Sales & Marketing
(08) 9306 3344
sales@davidmoss.com.au
26 Turnbull Road, Neerabup WA 6031

DAMOS is a leading manufacturer of PVC and HDPE Pipes, Fittings and accessories; established in Perth since the early 1960s as the David Moss Corporation, we supply a range of standard and customised solutions into clients across the ANZ region. With manufacturing facilities In WA and QLD, we have in house production and fabrication capabilities in order to support a variety of projects and industry sectors.



DEVELOPMENTWA

www.developmentwa.com.au

(08) 9482 7499
contact@developmentwa.com.au
Level 2/40 The Esplanade, Perth WA 6000

DevelopmentWA is the State Government’s central land and development agency. We drive economic and employment growth, demonstrate innovation and champion sustainability as we shape our State’s future. Our diversified portfolio has the scale, scope and strength to work towards zero carbon communities and deliver better social and economic outcomes for all.



DIRECTIONS WORKFORCE SOLUTIONS

www.directionswa.com.au

Peter Keenan, Operations Manager - 0475 971 148
Paul Bird, Apprentice Consultant - 0429 700 247
John McMenamin, Apprentice Consultant - 0475 953 770
(08) 9274 8502
enquiries@directionswa.com.au
7 Sayer Street, Midland WA 6056, 95 Wellington Street, Northam WA 6401

Directions has over 30 years’ experience providing workforce development solutions to businesses through apprenticeships and traineeships, alongside career development and advice to assist jobseekers to make the best choices. As a community based registered charity organisation, our focus is on results and on making a difference. We do not focus on profits or numbers but on outcomes and relationships. Our services support companies and individuals at all stages of life. Small enough to care about the personal touches and big enough to ensure you get all the support, expertise and advice you and your apprentice or trainee needs throughout the term of their training so you both get the most out of the experience. Any profits we make are reinvested into programs and activities that support our local community.



DOBBIE

www.dobbie.com.au

Dean Catchlove, Civil/Fire Sales Manager: deanc@dobbie.com.au
Allan Robinson, Civil/Fire Sales: allanr@dobbie.com.au
Phil Bardon, Managing Director: philb@dobbie.com.au
(08) 9249 7000
admin@dobbie.com.au
430 Victoria Road, Malaga WA 6945

The Dobbie name has been synonymous with the Australian foundry industry since 1862. Incorporated in W.A. in 1940, we’ve been the go-to name in precision engineered castings ever since. Our foundry produces quality castings for the civil infrastructure, defence, resources, fire protection, rail, heavy industry, gas reticulation and bespoke custom castings industries. Dobbie has a long, established history of manufacturing/supplying civil infrastructure products, for both government entities and commercial contractors and remains a primary supplier of MS gate & swing check valves, ductile iron pipe fittings, repair couplings, tapping bands, covers and other associated infrastructure products to the municipal water, residential sub-division, agriculture and gas supply sectors throughout Australasia. We have numerous product supply approvals with Water Corp. At Dobbie we may be recognised for our quality, cost effectiveness and product performance, but it’s our superior level of customer service that makes us stand out.



EJ AUSTRALIA

www.ejco.com

Peter Schwartz, Regional Manager WA, SA/NT
John Cooper, WA Sales Executive
Sang Nguyen, WA Sales Executive
(08) 9209 2930
wa.sales@ejco.com
6 Opportunity Street, Wangara WA 6065

EJ in Perth has a Perth warehouse full of infrastructure access solutions for your water, sewer, drainage, telecommunications and utility networks, and made to comply with the latest Australian Standards. When you need a manhole cover or stormwater grate, contact us for quick and easy supply.



ENERGY SKILLS SOLUTIONS

www.energyskillsolutions.com.au

Emanuela Robinson, Administration
(08) 9209 3833
admin@ess.edu.au
9/202 Camboon Road, Malaga WA 6090

Energy Skills Solutions is a Registered Training Organisation offering electricity and electrical training, assessment and training-related services to a range of industries. Training courses for the civil construction industry include:

- Underground Cable Laying
- Underground Cable Jointing and Terminating
- Identifying and Locating Underground Utility Assets
- Working Safely Near Electricity Network Assets (Overhead Power Lines and Underground Cables)
- Training courses are offered as a public course or as a corporate course (single client only). If you require a corporate course, our flexible approach to training ensures that we can fit in with your operational requirements and works program.



ENVIRO PLANT HIRE

www.enviropanthire.com.au

David Waters, Managing Director
Lynda Waters, Commercial Manager
0419 649 407
info@enviropanthire.com.au
14B Hurley Street, Canning Vale WA 6155

Enviro Plant Hire is a reliable, Western Australian owned and operated plant hire business servicing customers in the infrastructure, resources and energy sectors across Australia. With sites in Perth and Karratha, we source and supply quality plant, equipment and machinery so you can deliver your projects safely, efficiently and cost-effectively while minimising your environmental footprint. We are a certified Climate Active Carbon Neutral organisation, committed to action against climate change and protecting the communities in which we operate.



ENVIRO SWEEP

www.envirosweep.com.au

Gavin Cameron, Branch Manager
(08) 9456 3736
gcameron@envirosweep.com.au
1 Keera Court, Maddington WA

Enviro Sweep is proudly Australian Owned and is the largest provider of road sweeping services with a Large modern fleet of over one hundred and forty (140) technologically advanced and well-maintained road sweepers operating Australia wide. Our fleet of 40 sweepers operating from our Maddington facility are able to provide 24 hour 7 days per week coverage.



ESO SURVEYORS

www.esosurveyors.com.au

Paul Szalla, State Manager
(08) 6184 1852
p.szalla@esosurveyors.com.au
1 Erindale Rd, Balcatta WA 6021

ESO Surveyors provides specialist surveying solutions to the Australian construction industry. We deliver our services with highly qualified and experienced surveyors using the latest technology available. Our clients are mainly the Tier 1 and Joint Venture constructors and we have been involved in some of Australia's most iconic construction projects. Starting in Sydney over 30 years ago, ESO Surveyors now has offices in Perth, Sydney, Melbourne, Brisbane and Adelaide, employing over 100 staff. Our Branch Offices provide support to our on-site staff with specialists in data processing, CAD drafting, I.T., Human Resources and Quality and Safety Systems. Our Perth State Manager is an experienced and qualified construction surveyor who has a deep understanding of the needs of the industry. In an industry that presents many challenges, ESO Surveyors has a proven track record of delivering quality and value outcomes for all its clients.



FT WORKFORCE

ftworkforce.com.au

Thomas Dunne, Managing Director
1300 083 599
office@ftworkforce.com.au
Unit1/222 Walter Road West, Morley 6062

FT Workforce has a strong reputation in the recruitment & labour hire industry for having experienced consultants who understand the unique requirements of specific industry verticals. Finding highly skilled and well-experienced recruitment & labour hire personnel is now easier than ever when you entrust your staffing requirements to us. When you let a specialised recruitment firm such as FT Workforce handle the tasks of recruiting the right people for your projects, you will be able to save your resources and focus on other important aspects of your business. Through our dedicated labour hire specialist consultants, FT Workforce is able to deliver recruitment & labour hire solutions that align with your corporate culture and also meet your technical requirements. With 9 office locations nationwide you can be guaranteed local service for your next PSA. Our recruiters offer specialised recruitment services spanning across a range of industries with a culture that is focused on exceptional recruitment service. It's driven from our team of recruitment professionals, who contribute to the customer journey which ensures that they return time and time again. We only employ the highest calibre of recruitment consultants that take care of and nurture our customers' needs, creating lasting partnerships.



GHD

www.ghd.com

Craig Hugo, Relationship Manager - Contractors
Alicia Winkworth, Marketing Advisor
Philip Morgan, WA Market Leader - Transport
(08) 6222 8222
craig.hugo@ghd.com
Level 10, 999 Hay Street Perth WA 6000

GHD is a global professional services company that leads through engineering, construction, digital and architectural expertise. Our forward-looking and innovative approaches connect and sustain communities around the world. Delivering extraordinary social and economic outcomes, we are focused on building lasting relationships with our partners and clients. We aim to make water, energy and communities sustainable for generations to come by helping our clients navigate complexity from environmental approvals, to design and project delivery. In Western Australia, we are 700+ diverse and skilled professionals located in Perth, Albany, Bunbury, Geraldton and Karratha, supported by 10,000+ people across five continents. Our integrated team has worked on some of the largest infrastructure projects in Western Australia, including most recently Tonkin Gap and Forrestfield-Airport Link



HANSON CONSTRUCTION MATERIALS

www.hanson.com.au

(08) 9311 8811
jeremy.oneill@hanson.com.au
123 Burswood Road, Victoria Park WA 6100, PO Box 187, Victoria Park WA 6100

Hanson is one of Australia's leading suppliers of heavy building materials to the construction industry. We produce aggregates, including crushed rock, sand, gravel, crusher dust and road base and a high quality premixed concrete range This includes over 10,000 standard mixes, as well as premium and decorative concrete solutions that offer additional benefits like increased strength, higher durability, or in the case of our Imagecrete range, greater aesthetic appeal. Our third business division is precast concrete. It focuses on providing our customers with architectural and engineering solutions through modern precast design and a product range that includes loadbearing facades, cladding, hollowcore wall panels as well as flooring and structural precast concrete. Hanson is part of the HeidelbergCement group, which employs 57,000 people across five continents. HeidelbergCement is a global leader in aggregates and has leading positions in cement, concrete and heavy building products.



HEELAN & CO

www.heelanandco.com.au

Mark Vallence
Tony Heelan
(08) 9204 7777
mark.vallence@heelanandco.com.au
Ground Floor, 28 Walters Drive, Herdsman Business Park, Osborne Park WA 6017

We are a consulting firm specialising in providing industrial relations and management services. We only work for employers.



HHG LEGAL GROUP

www.hhg.com.au

Murray Thornhill, Director
(08) 9322 1966
reception@hhg.com.au
Level 8, 863 Hay Street, Perth WA 6000, GPO Box 2716, Cloisters Square PO WA 6850

HHG Legal Group has been proudly assisting Western Australian families, businesses, governments, and individuals for over 100 years. Our team understands the importance of the construction industry in Western Australia and its need for specialised and project driven lawyers. Whether you are the principal in a large mining, civil or infrastructure project or a domestic subcontractor, your business is guaranteed to be at risk in at least four areas: payment, timing, quality, and scope. Our experienced team of construction lawyers will help you identify, manage and minimise your risks from tender, to contract negotiation to final payment. Whatever the size of the project or your place in the contractual chain, our Building & Construction lawyers will find and implement strategies to improve your bottom line. When you choose to engage with HHG’s construction team for all your commercial, employee & industrial relations, dispute resolution, property, and business succession law needs, we understand the law that applies to your business and our lawyers are committed understanding your business operations to offer you cost-effective tailored solutions. CCF Member offer: Free initial 30-minute consultation either in person, over the phone or via video call.



HIQA GEOTECHNICAL

www.hiqa.com.au

Robert Warmington, Operations Manager - 0458 726 111
Kevin Noone, Laboratory Manager - 0406 480 589
Blake Schultz-Pike, Projects Coordinator - 0498 880 939
Luke Myall, Managing Director - 0418 836 460
(08) 8947 4802
navalbase@hiqa.com.au
42 Lionel Street, Naval Base, WA 6165

HIQA delivers NATA accredited geotechnical services for the government, construction, defence, and mining industries. Our quality control, conformance testing, and sampling services include: Concrete Sampling and Testing; Aggregate Sampling and Testing; Asphalt and Bitumen Sampling and Testing; Soil Sampling and Testing; and Annex Laboratories. In addition to these main services, we also provide: Environmental Sampling and Testing; Site classifications for residential slabs and footings; Pavement Investigations; Geotechnical Field Investigations with factual reporting. Our team is united by a simple but powerful mission: To be the preferred choice for our clients, our suppliers, our team members, and the industry at large.



HITACHI CONSTRUCTION MACHINERY AUSTRALIA (HCMA)

www.hcma.com.au

Martin Dadleff, Regional GM - West
David Harris, Branch Manager
Perry Maxwell, CE Sales Manager
(08) 9234 9800
salesperth@hcma.com.au
107 Allen Road, Forrestdale WA 6112, PO Box 3481, Success WA 6964

Hitachi Construction Machinery (Australia) Pty Ltd (HCA) has been providing Australian mining, construction, quarry and forestry industry customers with high-quality earthmoving equipment, parts, service and support for decades. We supply an extensive range of Hitachi and Bell products, parts and services through our 23 company owned branches nationally accessible 24/7 through our customer support centre on 1300 HITACHI (1300 448 224). We also provide customers with inhouse finance options through our partnership with Marubeni Equipment Finance providing competitive and customisable solutions. Above all we are a company of employees the health and safety of all employees and customers take priority.

HITACHI

Reliable solutions

HUMES (LAFARGE HOLCIM)

www.humes.com.au

Ben Thorton, Acting General Manager - Western Region
Madison Gaiger, Customer Service Officer
(08) 9253 5964
welshpool.sales@holcim.com
36-38 Felspar Street, Welshpool WA 6106

Humes has a long history of engineering precast and prestressed concrete solutions and, after 100 years of manufacture, our product range has never been more diverse, more competitive, or more in-tune with our clients’ needs than it is today. Humes offers a range of solutions for bridges and platforms, road and rail infrastructure, tunnels and shafts, retaining walls, pipeline systems, water treatment, reuse and detention, and traffic management. We can customise our solutions to ensure they create maximum value for your project, accommodating your site conditions, design requirements and construction factors.



INSPECWEST

www.inspecwest.com.au

Laurence Jankulovski, Director
Anthony D’Alonzo, Director
0405 979 102
info@inspecwest.com.au
PO Box 271 Mount Lawley, WA 6929

Located in Perth, Western Australia, INSPECWEST is a premium grade consultancy firm providing all the inspection requirements you need from start to finish. INSPECWEST prides itself on providing correct and accurate information about any building design issues or faults. Our objective is to know your outcomes and resolve the problems by giving a solidified solution that’s to the point. Western Australia is prime now for the building and construction industry due to international investments and constant growth trends in the market. Unfortunately, in some circumstances, things can be rushed and work not appropriately completed leaving a dispute in the project plan or development between developers and construction workers. At INSPECWEST, we look forward to working alongside your development projects or already established properties in Perth, Western Australia. Our areas cover Civil, Architectural, and any other structural issues.



IPLEX PIPELINES

www.iplex.com.au

Paul Walker, Head of sales
(08) 9340 4890
wasales@iplexpipelines.com.au

Iplex Pipelines are proud to be the leading supplier of PVC & Australian Made GRP pipe systems, Crevet ductile iron fittings, AVK valves, Gatic access covers & grates, Milnes tapping & repair solutions to government water authorities and private contractors throughout Western Australia. Our experienced local civil team with an absolute focus on customer service are available to help provide total solutions to CCF members.



JACKSON MCDONALD

www.jacmac.com.au

Thomas Jacobs, Partner
(08) 9426 6611
jacmac@jacmac.com.au
Level 17/225 St Georges Terrace, Perth WA 6000

Jackson McDonald is an independent, full-service commercial law firm offering legal expertise in a wide range of areas. Having operated in Western Australia for almost a century, we are one of the State’s largest law firms with 24 partners and almost 200 staff. We are proud of our deep networks with industry stakeholders from commercial businesses and regulatory bodies to government authorities. We have a rich history of helping multinational corporations and mining companies, banks and government agencies, local developers and high net worth individuals achieve their legal objectives.



KAIS HIRE

www.kaishire.com.au

Sharon Kais, CEO
Jordan Kais, Fleet Manager
(08) 9475 0800
reception@kaishire.com.au
501-507 Great Eastern Highway, Redcliffe WA 6104

Kais is the Premium choice of plant hire. Our fleet consists of Caterpillar graders, water trucks and dump trucks. Highly maintained and serviced gear guaranteed to perform on your next project. We provide wet and dry high options as well as provide Topcon GPS equipment. Kais has the niche in final trimming and provides 24/7 support.



KOMATSU AUSTRALIA

www.komatsu.com.au

(08) 9351 0555
SalesAdminWR@komatsu.com.au
94 Sheffield Road, Welshpool WA 6106

Komatsu Australia in conjunction with Komatsu LTD provide an end to end product solution across all sectors of our construction, quarry and mining industries. Our full range of equipment provides durability and reliability that is second to none, and we continue to lead in delivering intelligent machines with our SMART construction range. This allows our customer meet their business goals with high-quality equipment that improves production and lowers operational costs.



LAVAN

www.lavan.com.au

Shane Pentony, Partner
Greg Nairn, Partner
(08) 9288 6000
shane.pentony@lavan.com.au, greg.nairn@lavan.com.au
Level 20, 1 William St, Perth WA 6000, GPO Box F338, Perth WA 6841

Lavan is Western Australia’s largest independent WA-owned and operated law firm with more than a 120-year history. Lavan’s Construction and Infrastructure team has a unique understanding of the local civil construction industry. Civil contractors, both large and small, consistently choose the team to negotiate and draft significant contracts, handle claims management strategy and dispute resolution, and provide representation in litigation if and when necessary. Lavan’s team has outstanding relevant industry experience with all forms of construction contracts in use in Western Australia (standard or customised), and can assist civil contractors in the following ways:

- Trouble-shooting advice on the end of a phone call or email on an as and when required basis.
- Construction contract reviews for civil contractors. Lavan’s team is constantly involved in drafting and reviewing such contracts and understand the reasoning behind the various clauses and forms used, the common ‘traps’ for civil contractors, and mechanisms by which a civil contractor can protect and enhance its position.
- Pre-dispute advice on claims arising out of construction contracts. Lavan can assist a civil contractor in presenting and defending claims before any dispute arises and provide strategic claims advice.
- Representation in all forms of dispute resolution including litigation, arbitration, mediation, expert determination and rapid adjudication (security of payment) claims under the Construction Contracts Act (WA).

CCF Member Offer: Call us to discuss special arrangements for pricing, including fixed price work (fixed fee contract reviews) and discounted hourly charge out rates.



LEDGE

www.ledge.com.au

Tony Del Popolo, Corporate Operations Office
Brad Spencer, Finance Executive
Isaac Hough, Finance Executive
(08) 6318 2777
secure@ledge.com.au
Level 2, Westgate Building, 420 Bagot Road, Subiaco WA 6008

Ledge Finance is one of Australia’s most trusted commercial finance companies. West Australian-owned and operated – we are commercial finance brokers with a difference. Delivering tailored commercial finance solutions to businesses across Western Australia and nationwide for over 40 years, we have the knowledge and experience to assist your business in fulfilling its true potential. Our team has forged strong relationships with Australia’s leading banks and major specialist business lenders. We aim to secure the most suitable corporate or asset finance solutions on your behalf – and at the right price. We partner with our clients to create and consolidate long-term, mutually beneficial relationships, assisting them with the overall financial health of their business, which compliments their borrowing requirements. We constantly strive to provide value to our clients, their employees, and their families in new and innovative ways, whether by promoting them through our digital marketing channels or through engagement with our industry service partners. When you come to Ledge, you aren’t just getting competitively priced finance facilities; you are getting a partner who will work with you to help grow your business.



LIFTRITE HIRE & SALES

www.liftrite.com.au

Cameron Baker, Sales Manager
Tracie Williams, Accounts Payable
(08) 9246 6200
cameronb@liftrite.com.au
219 Bannister Rd Canning Vale WA 6155

LiftRite Hire & Sales are one of Perth’s leading suppliers of premium earthmoving machinery supplying world-class big brands like Kobelco and the Manitou skid & track loader range. Since 1983, we’ve built our reputation throughout Perth and across the state for sales, hire and maintenance of new & used materials handling and earthmoving equipment. We offer a tailored and responsive one-stop shop for our customers across the construction, mining and agricultural industries. We have a full range of excavators, skid steer and track loaders, rough terrain forklifts, attachments and more. Check out www.LiftRite.com.au for an unrivalled variety of earthmoving and forklift options today.



LIQUID LIMIT

mike.morris@liquidlimit.com.au

Mike Morris, Managing Director
0447 530 331
mike.morris@liquidlimit.com.au

Liquid Limit provides assistance to time-poor organisations to prepare or review documentation required for submissions, prequalification, management systems, audits, project deliverables and the like. The business partners have extensive experience across a range of disciplines, working with a variety of civil construction companies in Perth and Regional areas.



LOCKTON

www.locktonaustralia.com.au

Nick Turley, State Executive - Western Australia
Gavin Doherty, Business Development Manager
Gerry Favory, National Manager, Corporate Risks & Mining
(08) 9217 0800
nick.turley@au.lockton.com
Level 5/1100 Hay St, West Perth WA 6005

Lockton is the world’s largest privately-owned, independent insurance broker. We provide you with risk management, insurance broking, and employee benefits solutions. Our Construction and Civil Contractors team have the experience and capabilities to assist in navigating risk and designing tailored insurance solutions that match the risk profile of your business. Products and services include:

- Workers’ Compensation
- Trade Credit & Surety (Performance Bonds)
- Contractors Plant & Equipment/Motor Vehicle Fleet
- Injury Management & Return to Work Services
- Public & Products Liability/Professional Indemnity
- Contract Review
- Contract Works & Marine Transit
- Contractors Pollution Legal Liability
- Claims Management & Advocacy
- Insurance Program Review (Due Diligence)



MAJOR MOTORS

www.majormotors.com.au

Frank Johnston, Truck Sales Manager
Michael Shemeld, Trucks & Utes Sales
(08) 9365 6333 - Forrestfield, (08) 9331 9331 - Bibra Lake
fjohnston@majormotors.com.au, mshemeld@majormotors.com.au
789 Abernethy Road, Forrestfield WA 6058, 2 Selkis Road, Bibra Lake WA 6163

Major Motors have been a foundation ISUZU dealer since the introduction of trucks in 1972. Throughout this nearly 50 year period, our family owned business has been proud to represent ISUZU in jointly maintaining the position as the number one selling truck brand for over 30 consecutive years. With a broad product range, state of the art facilities and a high level of customer satisfaction, you can be sure that Major Motors and ISUZU will have a truck or ute for just about every application so you can be confident of getting the best, from the best.



MANHEIM

www.manheim.com.au

Daniel Sykes, Sales Manager
(08) 9323 6378
support@manheim.com.au
62 Grogan Road, Perth International Airport, WA 6105

Manheim is an Australian market leader backed by Cox Automotive in the provision of mining, construction, civil, industrial, transport, marine and automotive remarketing services, with an unrivalled range of products, services and expertise. The operations in Australia are backed by Manheim Worldwide. At Manheim Australia we aim to offer the best solutions from local expertise gained from over 50 years of experience in the Australian market. As one of Australia's leading provider of mining, construction, civil, industrial, marine and automotive remarketing services, Manheim caters for the needs of a diverse range of industry sectors including but not limited to Mining (fixed and Mobile plant) , Civil, Construction, Industrial, Transport and Marine. We offer onsite valuations , appraisals and online sales for all types of equipment and packages large or small throughout the whole of WA and nationally.



MATES IN CONSTRUCTION WA

www.mates.org.au

Liam Cabbage, CEO
Sinead Donovan, Communications and Events Manager
(08) 9463 6664
waadmin@mates.org.au
1/17 Oxleigh Drive, Malaga WA 6090

MATES is a charity established in 2008 to reduce the high level of suicide among Australian construction workers. MATES provides suicide prevention through community development programs on sites, and by supporting workers in need through case management and a 24/7 help line. The MATES program is based on the simple idea that suicide is everyone's business. If the building and construction industry in Australia is to improve the mental health and well-being of workers and reduce suicide, then it cannot be left to mental health professionals: everyone in the industry must play their part. Working for the construction industry in general, MATES is independent of employers and unions and never works directly for an employer. Programs are delivered across the industry regardless of employer or union affiliation.



MAYDAY RENTAL

www.maydayrental.com.au

Richard Wolton, Client Services Manager
Lucas Sartori, Operations Manager
Kye Keenan, General Manager
(08) 9409 0400
admin1@maydayrental.com.au
PO Box 1556, Wangara WA 6947; 2/20 Hemisphere Street, Neerabup 6031

Mayday Rental is a family owned and run business based in Western Australia. Established in 1992, Mayday has serviced local shires, civil, construction and earthmoving companies for the last 30 years. Their head office is in Neerabup along with a branch in Busselton servicing the South West. They have a diverse fleet of new and low-hour, high-quality machinery paired with an unequalled service. Mayday has the solution for your rental equipment needs.



MCINTOSH & SON

www.mcintoshandson.com.au

Mike Foskett, General Manager 0408 940 265
Andrew Cox, Sales 0438 383 915
Richard Gainsford, Sales 0438 383 517
Joe Cox, Sales 0405 774 837
(08) 9475 1600
perth@mcson.com.au
547 Great Eastern Highway, Redcliffe WA 6104

McIntosh & Son is a leading Australian machinery dealership group for the construction, earthmoving, agricultural and turf maintenance industries incorporating sales, finance, service and parts. With 11 locations across WA, QLD & VIC, McIntosh & Son is committed to providing a comprehensive and exceptional customer service.



MCT EQUIPMENT

www.mctequip.com.au

Anthony Grosser, Managing Director
James Grosser, Business Development Manager
Brodie Wilson, Workshop Support Manager
Danny Blazeski, Sales Manager WA & NT
(08) 6500 3460
admin@mctequip.com.au
50 Jessie Lee Street, Henderson WA 6166

MCT Equipment sources alternate lifting equipment so you can reinvent your customer solutions. A dedicated family business headed by Anthony Grosser, MCT has been in the industry for over 25 years. MCT supplies and maintains new and used mobile cranes, telehandlers, and related lifting products throughout Western Australia and the Northern Territory. No matter your requirements, the team at MCT can supply alternative lifting solutions, with innovation and design at the forefront, ensuring your company has the innovations it needs to lead the way. MCT are your partner for construction, mining, infrastructure, and marine lifting equipment with an emphasis on innovation and efficiency.



MITSUBISHI MOTORS AUSTRALIA LIMITED

www.mitsubishi-motors.com.au

1300 131 211
92 Welshpool Road, Welshpool WA 6106

Mitsubishi Motors Australia Ltd. (MMAL) enables people and businesses to drive their ambition through the technology, design and product advantages in our range of cars, SUVs and utes. With a network of around 200 dealers and service centres across Australia, you are never far from a Mitsubishi Dealer.



MJB INDUSTRIES

www.mjbindustries.com

Glenn Whitehurst, Sales Manager
Mindy Hovey, Sales Operation Coordinator
Kim Hovey, Director
(08) 9797 0999
sales@mjbindustries.com
Lot 102 Ditchingham Place, Australind WA 6233; PO Box A130, Australind WA 6233

MJB Industries Pty Ltd is a manufacturer of concrete pipe and precast products that prides itself on its quality & service. As a state-wide supplier MJB is the choice for many civil companies, contractors and government departments throughout the state of Western Australia. Over the years MJB has grown and diversified into a large enterprise which is now one of Western Australia's larger pipe and precast manufacturing plants. Our pipe range starts at 300mm with the ability to produce pipes and liners up to 2100mm diameter. MJB's precast division produces box culverts, Main Roads WA drainage structure components and headwalls.



MOTIVATION FOUNDATION

www.motivationfoundation.com.au

Timothy Hunter, CEO
(08) 9302 0505
52 Harrow Street, West Swan WA 6055

We are a not-for-profit organisation aiming to educate and develop life and employability skills for school students enrolled in Year 11, 12 or equivalents from diverse backgrounds. We offer students the opportunity to achieve a nationally recognised Certificate II in Civil Construction and Certificate II in Resources and Infrastructure Work Preparation, through on-site training and workplace experience while still in high school. Most importantly, the Motivation Foundation transitions students to the world of work, supporting the skills required by the community, while at the same time providing for the needs of students and their families, relieving poverty and advancing education.



NAPOLI CHARTERED ACCOUNTANTS

napoliaccounting.com.au

(08) 6163 1888
office@napoliaccounting.com.au
Golden Square, Level 8/32 St Georges Terrace, Perth WA 6000

As a modern, forward-thinking boutique firm, Napoli Chartered Accountants has heavily invested in their infrastructure, using the latest technology hardware and business systems to support their practice. Born from a strong desire to see clients succeed, Napoli and his team draw on their combined fifty years of experience to deliver proven, reliable and most importantly, honest business, accounting and taxation advice and services.



NATIONAL CREDIT INSURANCE (NCI)

www.nci.com.au

Dan Czaplinski, General Manager - WA
(08) 9211 8300
info@nci.com.au
Suite 2, 194 Main Street, Osborne Park WA 6017; PO Box 166, Osborne Park WA 6917

At NCI, we have established ourselves as the leading trade credit insurance and surety broker in Australia and New Zealand. Our offices extend to all major capital cities in Australia, Auckland, Wellington, Singapore and Malaysia. This presence enables us to help businesses trade with confidence to grow their business whilst managing their risk. Trade credit insurance is a highly specialised area of insurance. Over our 30 years of experience, we have developed an unmatched depth of expertise in arranging the right protection, at the best price, for your needs.



NUDGE

www.nudge.ngo

Mairead Connolly, Executive Director
(08) 9323 6378
enquiries@nudge.ngo
Don Aitken Centre, Waterloo Crescent, East Perth, 6004

Nudge is a for-purpose charity that focuses on getting young people into jobs and training opportunities in various industries throughout WA. Nudge has operated in WA for over 13 years with our unique sourcing, preparing and supporting model. Nudge is the industry leader in support and retention of trainees (above 90% for 3 consecutive years), due to our primary focus on individual needs, finding good people and working hard to keep them in their role.



OAKWOOD CONSULTING

www.oakwoodconsult.com.au

Mairead Connolly, Executive Director
(08) 9323 6378
enquiries@nudge.ngo
Don Aitken Centre, Waterloo Crescent, East Perth, 6004

A well-defined contractual and commercial strategy is imperative for the successful execution of any project. Oakwood Consulting provides contract and commercial management services, claims advice, expert witness, and audit and training services to clients across the resources, construction, infrastructure, and energy sectors. Oakwood Consulting is an independent firm that provides a focused approach that places the client's needs and aspirations at the forefront of what they do, and, to support this, their team provides a peer-leading service underpinned by experience, industry accreditation and independence. Oakwood's service offerings are supported by the principles of offering a fair, balanced, and pragmatic perspective founded in integrity, experience and fostering trust.



OFFROAD TRUCKS AUSTRALIA

www.offroadtrucks.com.au

Amber Gaden, Managing Director
Lee Morley, National Sales Manager
Adam Lockhart, National Technical Support Manager
(08) 9459 8911
sales@offroadtrucks.com.au
25 Garnet Way, Maddington WA 6109

Offroad Trucks Australia (OTA) is the leading importer and distributor for TATRA Trucks heavy duty off road vehicles produced in the Czech Republic. We're proud to be aligned with TATRA as their exclusive partner Australasia wide for over 25 years running. Our products are world renowned for their unique design, proven minimal downtime, longer life, lower total operating costs, and unbeaten performance in all conditions. As a privately owned family business, we appreciate good old fashioned customer service. We will work with you from concept to completion to determine the best truck solution for your specific needs, while also reducing your costs and providing a safe working environment.



PERTH MATERIALS BLOWING

www.pmb.com.au

Andre Pedroli, Managing Director
Julian Taylor, Operations Manager
1300 616 134
info@pmb.com.au
9/8 Clive Street, West Perth

Perth Materials Blowing is Perth's leading provider of soil blowing and mulch blowing services to the landscaping industry. Fast coverage for large areas, roof gardens, and hard to reach locations.



PGC RESOURCES

pgcresources.com.au

Daniel Di Giuseppe, Director - Business Development
(08) 6424 8977
1/19 Enterprise Way, Rockingham WA 6168

PGC Resources is an Australian owned business providing specialist labour solutions to the crane hire, mining, oil & gas, marine and construction industries. Established in 2012, PGC quickly developed its service offer in providing skilled labour in niche areas, specialising in providing crane and rigging labour to the crane industry as well as shutdown, construction and maintenance workforces to the resources sector.



PINNACLE HIRE WA

www.pinnaclehire.com.au

Myles Martin, Senior Dewatering Engineer
1300 724 493
4 Modal Crescent, Canning Vale WA 6155

Pinnacle Hire looks to support the civil construction industry by providing the latest water storage, pumping and treatment systems to assist with their endeavours to build the Australia of tomorrow. Pinnacle is dedicated to meeting or exceeding the, rightly, very high standards of quality and safety demanded by Australian industry, that's why we have left no stone unturned in our global search to source only the very best brands of equipment for your use. All our brand-new equipment is supported and maintained under our Eagle-eyed program, which ensures that when you hire an asset you can be sure it is in optimum working order. Then you can keep an eye on it, with our tracker service, so you know exactly where it's located at any given time. We also provide full product support to minimise equipment downtime and maximise your return on hire investment.



PORTER EQUIPMENT

www.portergroup.com.au

Matt Milner, Territory Manager
Andrew Mullins, Territory Manager
0448 159 479
matt.milner@porterce.com
174 Kewdale Road, Kewdale WA 6105

The Porter Group supplies world-leading brands of heavy equipment across sales, hire and parts in four countries- Australia, New Zealand, Papua New Guinea and Southern California in the USA. No matter your industry, we understand what it takes to get your business moving. Our quality range of equipment includes Hyundai tracked and wheeled excavators and wheel loaders, Sandvik mobile crushers and screens, Ammann compaction equipment, Furukawa rock breakers, Terex articulated dump trucks and NC site dumpers. At the Porter Group, we don't just supply equipment, we supply the expertise to match it to any application, the skills to maximise its uptime, and the finance to make it all happen.



POSITION PARTNERS

www.positionpartners.com.au

Clay Grono, WA Construction Sales Manager
Bernard Cecchele, WA Business Development Manager (Mining)
(08) 6241 4700
cgrono@positionpartners.com.au
1/11 Geddes Street, Balcatta WA 6021; PO Box 906, Balcatta WA 6914

With more than 300 people in offices Australia-wide, in South East Asia and New Zealand, Position Partners is focused on the distribution and support of intelligent positioning solutions for geospatial, construction and mining projects. At Position Partners, we are committed to increasing productivity for our customers and building lasting business relationships around high calibre positioning activities. Position Partners is the exclusive Australian distributor for Topcon machine control and positioning systems. Complementary solutions from other leading technology innovators include 3D laser scanners, remotely piloted aircraft, machine weighing and proximity detection systems and a range of deformation monitoring options. Advanced hardware systems are powered by sophisticated software platforms that enable customers to analyse, monitor and design efficiently. A full range of leading instruments and systems is backed by reliable service and industry expertise to give our customers the support they need for any project.



POWER ON PLANT HIRE

www.poph.com.au

Craig Warnes, Operations Manager
0448 486 222
craig@poph.com.au
1103 Lambden Road, Karratha, WA 6714; 138 Wattleup Rd, Wattleup WA 6166

Power On Plant Hire offers a wide range of plant hire solutions inclusive of excavators, excavator attachments, water carts, tipper trucks, vac trucks, loaders, tracked loaders and varies small plant and equipment. We provide dry and wet hire on an array of equipment for a variety of clients and applications including private & government contractors, civil constructions sites, rail and mining companies. With over 20 years of experience in the construction & related industries, Power On Plant Hire is the plant & equipment hire company of choice. We have worked with a diverse array of clients: from small projects to some of the largest tier construction companies in Australia. We pride ourselves on the excellent quality of our equipment, service and the experience and knowledge of our team, so whatever your equipment hire needs, you know you can rely on Power On Plant Hire to deliver.



PROTECH GROUP

www.protech.com.au

Daniel Fowler, Regional Manager WA/SA
Greg Bambrick, Business Manager
Rebecca Mackintosh, Account Manager
1800 477 683
enquiries@protech.com.au
Unit 6, Level 1, 224 Balcatta Road, Balcatta WA 6021

Protech is an Australian privately owned, leading and dynamic provider of technical and professional advanced workforce acquisition and management services. As a specialist in the provision of semi-skilled, skilled, technical, trades and professional personnel, we are determined to mitigate risk to our clients and provide flexibility that enables them to successfully win and deliver major projects in ever increasingly complex operating environments. Our range of services includes:

- High quality and responsive temporary labour hire
- Traditional permanent recruitment and selection services
- Project workforce planning
- Project management services
- Apprentices and Trainees
- Alliance model solutions



PSC INSURANCE BROKERS PERTH

www.pscinsurance.com.au

Caroline Jackman, Managing Principal
Justin O'Keefe, Account Manager
Rod Tonzing, Account Director
(08) 9382 7822
jokeefe@pscinsurance.com.au
Level 1, 905 Hay Street, Perth WA 6000

PSC provide insurance solutions and sound risk management advise to Civil Contractor businesses across Australia. Our principle focus is that of developing partnerships with our clients, harnessing the experience and imagination of our people to deliver the cost effective and innovative solutions you need. We provide a highly professional service to our clients by securing the best covers in terms of price and security. We also provide a comprehensive claims management service and offer Injury Management services where required. We have arrangements with all major insurers and underwriting organisations locally and globally.



RAPID CRUSHING & SCREENING CONTRACTORS

www.rapidcrushing.com.au

Bernard O'Sullivan, Business Development Manager
(08) 9452 5888 / 0437 864 033
reception@rapidcrushing.com.au
577 Bickley Road, Maddington WA 6109

Rapid Crushing & Screening Contractors Pty Ltd, a privately owned WA Company, was established in 1978 and continues to be a leading service provider to the civil contracting, mining and resource industries throughout Australia through the provision of crushing, screening and conveying equipment either on contract tonnage rates or on hire. We are the largest independently owned crushing & screening contractor in Western Australia. The company specialises in crushing and screening of all types of mineral ores including iron ore, gold & nickel, special class site preparation fill materials as well as concrete and road aggregates (to AS & MRD specs), rail ballast, road base, blast stemming, rip rap & armour rock. In addition to offering crushing & screening services, Rapid has established a new service in constructing mine site tailings facilities. Rapid Dams offers services in building wet and dry lift tailings storage facilities, plus clay and HDPE and PVC lined ponds built to any size. We also undertake dam extensions, the raising of embankments, road construction, drainage and rehabilitation earthworks.



RECRUITWEST

www.recruitwest.com.au

Brad Pense, Managing Director
Jonno Seen, Operations Manager
Ben De Chanee, South West Operations Manager
(08) 9368 9800
admin@recruitwest.com.au
5 Charles Street, South Perth, WA 6151

RecruitWest was founded in 2001 with the vision of providing honest and reliable Recruitment Services to the Industrial and Resources sectors of Western Australia. The dream started with a dedicated and experienced team of industry-based professionals who were passionate about delivering an efficient and cost effective service to clients. The inspiration to achieve these services was driven by the family values incorporated into developing long lasting valued business relationships. RecruitWest has evolved from the purity of delivering Staffing, to now also providing a range of Integrated Business Solutions including Human Resource Management, and Workplace Health and Safety.



REDDIFUND

www.reddifund.com.au

Kieron Gubbins, CEO
(08) 9481 0259
info@reddifund.com.au
Unit 2, 1st Floor/44 Parliament Place, West Perth WA 6005

ReddiFund supports the building and construction industry in W.A. by providing a fee-free employee redundancy entitlement service for employers to meet their legal obligations for Redundancy Entitlements. We also offer various insurance covers at low cost premiums for those who are a member of the fund plus corporate health insurance discounts with HBF and HIF. ReddiFund is a major sponsor of MATES In Construction WA to enable them to continue their invaluable service to workers and their family within the building and construction industry so that help is available to them when they need it the most.



RSM AUSTRALIA

www.rsm.global/australia

David Collins, Principal
AJ Neo, Principal
(08) 9261 9100
rsmenquiries@rsm.com.au
Level 32 Exchange Tower, 2 The Esplanade Perth WA 6000

Find audit, tax and consulting experts with property and construction expertise at RSM. Our property and construction clients rely on our technical knowledge and rich experience to help them manage risk, maximise opportunity, and improve performance. As the fifth-largest audit, tax and consulting network in the world, RSM has 32 offices across Australia (including 20 in WA) and a global presence in 123 countries. This gives our clients access to a huge breadth and depth of experience, and a vast network they can leverage to grow their business. RSM has a reputation for outstanding client service, developed over our 100-year history. Our clients have repeatedly recognised us as the Best Accounting and Consulting Firm in The Financial Review Client Choice Awards. For a free initial consult or business health check, please contact your local RSM office.



SITECH WA

www.sitechwa.com.au

Piero Liscia, General Manager
Angelo D'Agostino, Sales Manager
(08) 9392 7700
sales@sitechwa.com.au
1/8 Hasler Road, Osborne Park WA 6017

SITECH WA is the technology provider for construction, landfill, marine and mining industries. We are an authorised dealer for several global brands that include Trimble, Loadrite, Rajant, Freshfilter and Lincoln. We offer a comprehensive portfolio of technology solutions that consists of machine control systems, site positioning systems, marine construction systems, construction asset management, construction software, on-board weighing solutions, cabin filtration systems, wireless solutions and internet-based communication infrastructure and safety solutions. SITECH WA provides full commitment in customer sales, hire, service, training, and technical support for our clients in Western Australia.



SMARTSTREAM TECHNOLOGY

www.smartstream.net.au

Besim Kqiku, General Manager - WA
(08) 9526 1440
besim@smartstream.net.au
17 Cardup Siding rd, Cardup WA 6122

Smartstream Technology is a proud Australian owned company specialising in the provision of civil engineering and infrastructure solutions, through a developed range of innovative sewer/wastewater and stormwater products. Smartstream Technology is dedicated to continually investigating new processes and materials to ensure we are at the forefront of providing the most advanced and beneficial products for all sewer and stormwater systems in Australia.



SMITH BROUGHTON AUCTIONEERS

www.sbauction.com.au

Darren Smith, Managing Director
Michael Smith, Director
Chris Rocci, General Manager
(08) 9374 9222
sales@sbauction.com.au
21 Military Rd, Midland WA 6056; 12 Hematite Dr Wedgefield, WA 6721

Founded in 1977, Smith Broughton Auctioneers is a family owned business and a leading auction house specialising in the remarketing of used mining, construction, transport, agricultural and industrial equipment assets. There is no 'one-size-fits-all' approach, we recognise that each of our clients may require alternative, or a combination of strategies to achieve desired outcomes. Whether you're looking to buy or sell equipment, Smith Broughton Auctioneers has the expertise and knowledge to deliver upon your key asset realisation objectives.



STRUCTERRE CONSULTING

www.structerre.com.au

Mel Castle, Geotechnical Division Manager
Ben Wilson, WA Geotechnical Business Development Manager/Annex Laboratory Team Leader
Wayne Rozmianiec, Laboratory Manager
(08) 9205 4500
perth@structerre.com.au
1 Erindale Road, Balcatta, WA, 6021

Through the deployment of our widely scoped NATA Accredited Laboratories, we aid in the construction of bulk earthworks constructions, pavements, dams, infrastructure, aerodromes and defence facilities for residential, mining and industrial projects. We conduct on and off-site laboratory testing for materials classification, compaction control, and other specialised testing of soil & aggregate materials. We pride ourselves on quality of service and cater to the needs of our clients. Structerre Consulting are a multi-disciplinary engineering consultancy with over 45 years of experience. We pride ourselves on the success and fulfilment of clients and employees. Our purpose is to further our client's success by providing an innovative, sustainable, and cost-effective engineering service. We understand that each one of our clients has different needs, which is why we focus on building good relationships to ensure those needs are met. We provide ongoing support and go that extra mile to ensure the success of our clients.



TAP INTO SAFETY

www.tapintosafety.com.au

Dr Susanne Bahn, Director / CEO
1300 901 849
info@tapintosafety.com.au

The Tap into Safety Platform has online and mobile-friendly safety, leaders, managers and supervisors, and mental health training with detailed reporting and simple integration. We have a substantial library of out of the box courses that cover a wide range of high-risk industries. We can also provide custom-built courses to cover your specific workplace scenarios. The interactive safety training uses 360-degree panoramic scenes where we can, and eLearning where we can't, and the employee mental health training uses MicroLearning. Our 1000+ clients use the platform to improve their safety inductions, as refresher hazard awareness training, verify the theory part of their VOC's and as part of their well-being programmes. You only pay for what you use with our per-use credit model, and there are no lock-in contracts or subscription fees. There are also free resources on the Platform including our robust assessment and GAP reports to prove ongoing competency and compliance, and mental health support such as self-help articles and mindfulness meditations.



TECHFORCE PERSONNEL

www.techforce.com.au

Alex Prime, Division Manager - 0455 111 630
Leah Taylor, Recruitment Manager - 0455 566 628
(08) 6363 7040
recruitment@techforce.com.au
Level 6, Chancery House, 30 The Esplanade, Perth WA 6000

Techforce are a privately owned national recruitment agency and project management firm specialising in blue and white collar recruitment across the mining and resources and civil construction industries. Our recruiting teams across Australia have the direct hands on industry knowledge to hand pick the specialist staff to perfectly match your business' needs. Alex Prime leads our civil construction team of 8 consultants in Perth who share a combined 40+ years' experience supplying and managing 250+ civil contractors across WA's largest civil construction companies. Our project delivery team is headed up by the owners of the business who work closely with our business partners throughout the life cycle of their projects from tender through to execution. Speak to our team today to understand how we can help you achieve that competitive edge.



TEN RECRUITMENT

www.tenrecruit.com.au

Nik Hardiman, Founder / Director
0401 866 194
info@tenrecruit.com.au
Barker House, 49 Hay St, Subiaco WA 6008

The Technical & Engineering Network Pty Ltd (TEN) is an independently owned and managed recruitment business with over 35 years’ experience in technical recruitment. As a local company with international standards, reach and experience we understand people are the most important part to any company. With specialist recruiters focusing on technical and engineering markets, we fully understand your projects, our clients and our candidates. Creating opportunity for our customers is what we excel at. TEN offer a complete end-to-end recruitment solution for employers. Having successfully partnered with a wide range of companies, we understand that every organisation is different. We will always take the time to truly get to know your business and ensure we fully understand your company’s unique values and culture. We understand the importance of partnering with an agency you can trust, who will represent your business professionally in a niche market and will only introduce people who are well suited to your specific requirements.



TERRA FIRMA LABORATORIES

www.terrafirmalabs.com.au

Tom Seymour, Director
(08) 9395 7220
admin@terrafirmalabs.com.au
19 Weatherburn Way, Kardinia WA 6163

Terra Firma Labs has secured itself as one of Australia’s most trusted materials testing and consultancy firms, establishing ongoing relationships in business and government. Terra Firma Laboratories provides fully independent NATA-accredited materials testing across a comprehensive range of laboratory services for civil engineering and construction projects. In just over a decade, Terra Firma Labs has secured itself as one of Australia’s most trusted materials testing and geotechnical laboratory service, establishing ongoing relationships with multinationals, joint ventures and government departments. With comprehensive field and laboratory experience in geosynthetics, soil and rock materials, our team of in-house experts has helped establish world’s best practice laboratory testing across Australia’s construction and mining sectors at every scale.



THE APPRENTICESHIP COMMUNITY

www.apprenticeshipcommunity.com.au

Jo Eagle, State Manager
(08) 6165 3362
jo.eagle@apprenticeshipcommunity.com.au
Unit 1, 1 Tanunda Drive, Rivervale WA 6103; PO Box 118, Belmont WA 6984

The Apprenticeship Community delivers the Federal Government’s Australian Apprenticeship Support Network (AASN) service in WA, providing support to companies and individuals helping them succeed in high-quality apprenticeships and traineeships.



THE REECE GROUP

www.reece.com.au/civil

(08) 9253 8110 (Canning Vale); (08) 9303 3440 (Wangara);
(08) 9722 8610 (Bunbury)
6044@reece.com.au (Canning Vale); 6040@reece.com.au (Wangara);
6047@reece.com.au (Bunbury)
18 Production Road, Canning Vale; 47 Conquest Way , Wangara;
9 Campbell way, Davenport (Bunbury)

Reece Civil + Viadux are leading suppliers of water and environmental solutions. We provide market leading products and services for the most challenging applications throughout the water, irrigation, mining, building, oil & gas, power, and process industries. Our Vision is to be the most progressive and responsive supplier of water network solutions that our customers love.



TOTAL ROCKBREAKING SOLUTIONS

www.totalrockbreaking.com.au

Jeff Jackson, Sales Manager
Mark Godsell, Service Manager
Paul Ingleson, Engineering Manager
1300 921 498
sales@trswa.com.au
10 Ferguson Street, Kewdale WA 6105

Total Rockbreaking Solutions (TRS) is acknowledged as the leading provider of excavator and skid steer attachments, fixed rockbreaker boom systems, automation systems and other specialty products for demanding applications in mining, construction, civil works, earthmoving and demolition industries. With extensive industry-specific knowledge and experience we provide service, advice and innovative solutions that help you enhance safety, reduce downtime and optimise your operations. Getting the work done reliably and on time is essential and therefore we have selected only industry leading manufacturers, allowing you to choose from a range of quality and reliable products that can operate in harsh conditions without missing a beat.



TUTT BRYANT EQUIPMENT

www.tuttbryantequipment.com.au

James Barritt, WA State Manager
Doug Long, WA Sales Manager
Kevin Ditchburn, WA Service Manager
Jason Pryce, WA Parts Manager
(08) 9478 0600
wasales@tuttbryant.com.au
50 Great Eastern Highway, South Guildford 6055; PO Box 261, Belmont WA 6984

Tutt Bryant Equipment is the leading multi franchised National Distributor of construction equipment and cranes in Australia. We deal in the selling and provision of equipment, parts and services through our company owned branches across Australia including strategically located independent dealers. Tutt Bryant Equipment provides a comprehensive selection of quality equipment to a wide range of industries including construction, government sector, infrastructure and the general equipment hire industry. Our brands include Bomag, Sumitomo, Kato Cranes, Sany Cranes, AJ Power, Venieri, Yanmar, Okada, Berco and Metso. The total equipment portfolio includes excavators, loaders, compactors, milling and paving machines, mobile crushers and screens and cranes.



UNICORN RISK SOLUTIONS

www.unicornrisk.com.au

JC van der Walt, Director
Sharon Harwood, Operations Manager
(08) 6555 6595
admin@unicornrisk.com.au
1050 Hay St, West Perth WA 6005

Unicorn Risk Solutions are a Perth based Insurance Broking & Risk Management company with a strong and growing civil contractors client base in Western Australia and around Australia. We strive to simplify the complexities of insurance and provide our clients with a pro-active service offering that is unique in every way. Our people have diverse backgrounds in the insurance industry, law, psychology, risk management and decades of combined industry experience that allow us to leverage our combined skills for the benefit of our clients. Our team of professional and friendly people are backed by a global network through our partnership with the Howden Group.



VINIDEX

www.vinidex.com.au

Simon Porter, xxx
Omer Ahmad, xxx
(08) 9337 4344
waprojects@vinidex.com.au
10 Sainsbury Road, O’Connor WA 6163;

Vinidex is a leader in Australian manufacturing and supply of advanced pipe systems and solutions, connecting Australian people with water and energy. We provide a broad range of pipeline systems and solutions for building, infrastructure, irrigation and rural, mining and industrial, gas and energy applications. A proud Australian manufacturer, we have a history of over 60 years in Australia with proven long-term performance and reliability. Vinidex is backed by the strength of Aliaxis, a global leader in plastic piping solutions, with over 16,000 service professionals worldwide. We are passionate about creating sustainable, innovative solutions for our customers and communities.



WA FUEL

www.wafuelsupplies.com.au

Andrew Glover, Managing Director
Chris Johnson, Sales Manager
Shanay Del Borrello, Sales Coordinator
Michael Librizzi, Business Development Manager
(08) 9468 7338
salesadmin@wafuels.com.au
44 Mandurah Road, Kwinana Beach WA 6167

Established in 2015, WA Fuel Supplies is 100% Western Australian owned and operated business servicing clients across Western Australia and Victoria. WA Fuel offer total fuel packages including bulk fuel supply, tank storage options, on site refuelling, lubricant supply, an extensive card network and fuel management systems, all taking the hassle out of fuel. WA Fuel services the civil construction, mining, transport, agriculture, oil and gas industries with these end-to-end solutions. With a fleet of 22 trucks on the road allowing for fluid scheduling and proactive deliveries, WA Fuel can meet all your petroleum and lubricant needs, ranging from as small as 100L drops through to 105,000L, including Diesel, ULP and Ad Blue.



WARP TRAFFIC MANAGEMENT

www.warpgroup.com.au

Stephen O'Dwyer, Managing Director
Britt O'Dwyer, WA State Manager
1300 131 204
Sales.WA@warpgroup.com.au
19 Stebbing Road, Maddington, WA, 6109

As leaders in the traffic management industry, since 1997 Warp have been providing a full range of traffic management services to Australia's leading contractors, with the capability to deliver on a project of any size. As a company, we believe that it is our people that drive the success of the business. Our fresh attitude, honest communication and personalised service is what sets us apart. With a long history in this industry, we extend to you the sharing of knowledge gained over many years.



WESTERN POWER

www.westernpower.com.au

13 10 87
363 Wellington Street, Perth WA Australia 6000

Western Power is a State Government owned corporation that is committed to connecting people with electricity in a way that is safe, reliable and affordable.



WESTERN UNITED FINANCIAL SERVICES

www.westernunited.com.au

Angela Harris, General Manager
Brett Waterman, Managing Director
Matt Thompson, Account Executive - Heavy Transport
(08) 9221 2022
westernunited@westernunited.com.au
L9, 12-14 The Esplanade, Perth WA 6000;
PO Box Z5007, Perth St Georges Tce WA 6831

Specialists in insurance broking, claims management, risk management and personalised service. Dedicated transport division catering specifically for all road transport, earthmoving and other heavy vehicle industries.



WESTRAC

www.westrac.com.au

Darryl Burton, Construction Business Manager Major Accounts
(08) 9377 9674 | Darryl.Burton@westrac.com.au
Kevin Kaart, Construction Business Manager (Regional) (08) 9274 9211 | Kevin.Kaart@westrac.com.au
Cade Hindmarsh, Construction Business Manager Retail (08) 9377 8831 | Cade.Hindmarsh@westrac.com.au
Darren Hall, Used Equipment & Rental Business Manager (08) 9377 9404 | Darren.Hall@westrac.com.au
1300 881 064
2 Reid Rd, Perth Airport WA 6105; Locked Bag 9, Midland WA 6056

As one of the largest authorised Caterpillar® dealers in the world, WesTrac provides customers with a wide array of machinery and construction equipment as well as a comprehensive whole-of-life management solution designed to make owning and operating equipment as easy, profitable and safe as possible. WesTrac can assist you with machine selection, finance options, maintenance and resale.



WILLIS TOWERS WATSON

www.wtwco.com/en-AU

Sean Condo, Associate Director
0433 497 272
sean.condo@wtwco.com
Level 4, 88 William Street, Perth WA 6000; PO Box Z5464, St Georges Terrace, Perth WA 6831

WTW is a leading global insurance broking, advisory and solutions company. We manage people, risk and capital to propel construction and civil contractor's businesses forward.



WIRTGEN

www.wirtgen-group.com

Stuart Torpy, Managing Director
Marc Fernandes, Area Manager WA/NT
Ben Lefroy, National Sales Manager AU/NZ Kleemann
(08) 6279 2200
saleswa.australia@wirtgen-group.com
Lot 2, Great Eastern Highway, South Guildford WA 6021

Wirtgen Australia is a wholly owned subsidiary of the Wirtgen Group and is the factory distributor for Wirtgen Road Profilers and Stabiliser/ Recyclers, Hamm Asphalt and Soil Compaction Equipment, Vögele Asphalt Pavers, Kleemann Crushers and Screens, Benninghoven Asphalt Plants and Ciber Mobile and Stationary Asphalt Plants. Wirtgen is the world market leader in road construction technologies with a worldwide distribution, sales and service network.



WORRELLS SOLVENCY

www.worrells.net.au

(08) 9318 4900

perth@worrells.net.au

Level 4/15 Ogilvie Rd, Mount Pleasant WA 6153

We are insolvency and turnaround teams who help both companies and individuals to recover from difficult business or personal financial situations and assist the creditors attached to these matters. When this can't be achieved, we help wind down operations or manage personal insolvency procedures, and recover secured debts with expert knowledge, delivered with thought and care. The Worrells Group is a group of independent members firms.



ZENITH SEARCH

www.zenithsearch.com

Guy Fulcher, Director

(08) 9480 0479

enquiries@zenithsearch.com

Suite 6, Level 3, 1 Hood Street West, Subiaco WA 6008

Zenith Search was established in 2011, with our Directors operating successfully in the construction sector since 2006 we saw an opportunity to develop a new business that specialised in delivering an exceptional level of service to the market. Our business has a trusted reputation and enviable track record in delivering contract, permanent and executive search recruitment services. Since 2011 we have grown and now have a presence in Sydney and Melbourne as well as our head office in Perth. Our sector coverage has diversified to include civil, SMP, E&I and commercial construction, mining operations and engineering, corporate services and executive recruitment. Zenith Search is recognised as a leading provider in the market and our clients trust the professional and ethical approach we adopt in every situation. Our methods are proven and the levels of success attained mean we benefit from continuing repeat business with leading companies across Australia.



DON'T DIG BLIND, SEARCH BEFORE YOU DIG ONLINE EVERY TIME.

Avoid damaging vital underground assets such as high-voltage electricity or telecommunication cables, gas mains, sewer or water pipes.

Before You Dig Australia (BYDA) is the national organisation for safe digging and excavation practices. The BYDA service lets users obtain plans and information on underground pipes and cables. Recently, BYDA launched the new "Utility Plans Reading" educational initiative, allowing users to upskill their interpretation of utility plans and break through barriers that hinder safe work practices.

Sessions cover key communication, energy, water, and gas providers and can be customized to meet your organization's requirements, allowing your team to apply the newly learned skills as soon as they leave the session.

Scan the QR code or visit www.byda.com.au to book a FREE session today



Zero Damage - Zero Harm



PSC INSURANCE BROKERS:

Proud Supporter of CCF in Western Australia

PSC Insurance Brokers has joined forces with the Civil Contractors Federation to develop a range of services and products to give you insurance cover that meets your unique business needs whilst recognising the importance of reducing the cost of insurance.

We believe insurance is about People, Property and Liabilities and we focus on managing these risks for you.

We have in-depth experience protecting the critical risks of the Civil Contracting and construction sectors, protecting businesses and projects, large and small in the following areas:

- » Workers Compensation
- » Plant & Equipment Insurance
- » Public Liability Insurance
- » Construction Insurance
- » Property & Asset Insurance
- » Management Liability
- » Cyber Insurance

Our specialist insurance brokers are committed to providing considered advice; combining our extensive knowledge of the sector with an in-depth analysis of your business. We leverage our scale with leading underwriters to ensure you access cover that is cost-effective and specific to your business requirements.

For more information:

Justin O'Keefe

M 0427 176 107

E jokeefe@pscinsurance.com.au

Rod Tonzing

M 0437 780 337

E rtonzing@pscinsurance.com.au

www.pscinsurance.com.au

PSC Insurance Brokers Perth Pty Ltd is a Corporate Authorised Representative (CAR 1238950) of Professional Services Corporation Pty Ltd (AFSL 305491).

Please refer to our Financial Services Guide on our website for information on our products and services and how we are remunerated.